

## Psychiatric Mental Health Graduate Programs – 2008 Update

Graduate education in Psychiatric Mental Health (PMH) nursing has witnessed a significant shift in the last decade. The number of graduates has increased and the programs offering Nurse Practitioner (NP) models of preparation have grown. During this decade the various types of PMH programs has also increased. The American Association of Colleges of Nursing (AACN) has 10 different categories for PMH graduate nursing programs: Clinical Nurse Specialist (CNS), Child/Adolescent CNS, Adult PMH NP, Family PMH NP, NP dual tracks (2 types), Combined NP/CNS (4 types).

It is interesting to place these changes in the context of the trends in types of graduate programs. The graph below represents these shifts. Three data sources were used for this graph: 1999- custom list supplied by National League for Nurses.

2002, 2005, 2007- custom list of programs from AACN

2001, 2003, 2004- PMH programs as listed in AACN publication, *Enrollments and Graduations*.

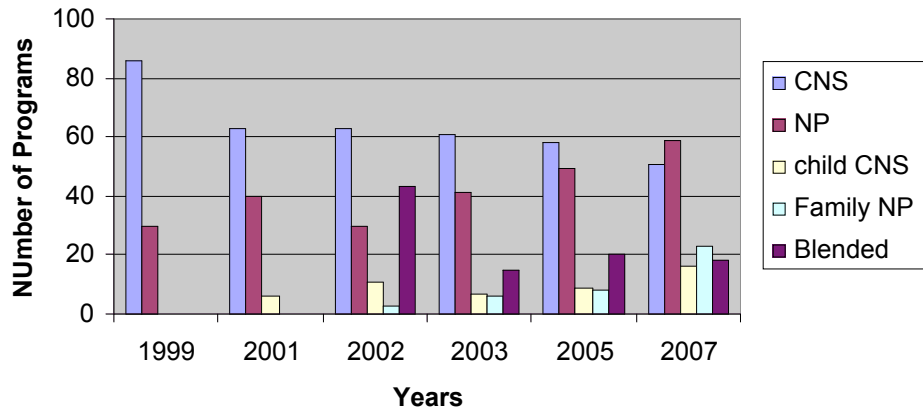
Across the years, these data sources provide a good picture of trends in NP and CNS programs. The category of blended programs/combined programs is a bit difficult to number across the years, more than likely due to how individual schools identify and report data on these programs. Up until 2002, blended CNS/NP programs were reported as one number (across all specialties) in AACN *Enrollments and Graduations*. In 2002, in a custom report sent to the author, the number of PMH blended programs was listed at 43. The next year (2003) when blended programs were identified by specialty in AACN, *Enrollments and Graduation*, the number of PMH blended programs was reported as 15. Since then the number of blended programs represented in this graph is based on AACN custom reports of PMH programs, which as of 2007 lists 18 such programs.

At the current time, according to AACN data, 116 Colleges/Schools of Nursing offer a PMH graduate program. Twenty six colleges offer both NP and CNS programs, 45 schools only offer PMH-NP and 25 schools only offer the PMH-CNS. The number of schools offering child programs is growing (n=16) as is the number offering PMH-NP family (n=23).

Attached is a list of current Psychiatric Mental Health (PMH) graduate nursing programs. This list of 109 schools/colleges of nursing with PMH graduate programs is one kept over the years by the author, updated with data from the American Association of Colleges of Nursing (AACN) custom data report on Graduate Programs in PMH nursing and from a list posted on American Psychiatric Nurses Association Web site. For this list, the web sites of each school were checked to determine the presence of a PMH graduate program. If the list as posted is in error, please contact ISPN, we will update the list bi-yearly.

Kathleen R. Delaney, PhD, PMH-NP

### PMH Graduate Programs



# Graduate Programs in Psychiatric Nursing

## January 1, 2009

### Alabama

University of Alabama at Birmingham, School of Nursing  
University of South Alabama, College of Nursing

### Alaska

University of Alaska, Anchorage School of Nursing

### Arizona

Arizona State University, College of Nursing & Healthcare  
University of Arizona, College of Nursing

### Arkansas

UAMS, College of Nursing  
University of Central Arkansas, College of Nursing

### California

California State University, Long Beach, School of Nursing (post-masters only)  
California State University, Los Angeles, School of Nursing  
Point Loma Nazarene University, School of Nursing  
University of California, San Francisco, School of Nursing

### Colorado

Colorado State University – Pueblo, School of Nursing  
University of Colorado at Denver, School of Nursing

### Connecticut

Fairfield University, School of Nursing  
St. Joseph College, Nursing Division  
University of Connecticut, School of Nursing (post-masters only)  
Yale University, School of Nursing

### District of Columbia

The Catholic University of America, School of Nursing

### Florida

Florida International University, School of Nursing (moratorium on admissions 2008)  
University of Florida, College of Nursing  
University of South Florida, College of Nursing

### Georgia

Georgia State University, College of Nursing

### Hawaii

University of Hawaii at Manoa, School of Nursing

### **Illinois**

Rush University, College of Nursing

University of Illinois at Chicago, School of Nursing

### **Indiana**

Indiana University, School of Nursing

### **Iowa**

Allen College, School of Nursing

The University of Iowa, College of Nursing

### **Kansas**

University of Kansas, School of Nursing

Wichita State University, College of Health Professions, Dept. of Nursing

### **Kentucky**

Northern Kentucky University, College of Nursing

Eastern Kentucky University, College of Nursing

University of Kentucky, College of Nursing

University of Louisville, College of Nursing

### **Louisiana**

Louisiana State University Medical Center, School of Nursing

McNeese State University, School of Nursing

Southeastern Louisiana University, College of Nursing

The University of Louisiana at Lafayette, College of Nursing

### **Maine**

Husson College, School of Nursing

University of Southern Maine, College of Nursing

### **Maryland**

University of Maryland, School of Nursing

### **Massachusetts**

Boston College, School of Nursing

MGH Institute of Health Professions

Northeastern University, School of Nursing

Regis College, School of Nursing

University of Massachusetts Lowell, School of Nursing

### **Michigan**

Grand Valley State University, College of Nursing  
University of Michigan-Flint, College of Nursing  
University of Michigan, School of Nursing  
Wayne State University, College of Nursing

**Minnesota**

The College of St. Scholastica  
University of Minnesota, School of Nursing

**Mississippi**

University of Mississippi Medical Center, School of Nursing  
University of Southern Mississippi, School of Nursing

**Missouri**

University of Missouri-Columbia, School of Nursing  
Saint Louis University, School of Nursing

**Nebraska**

Creighton University, School of Nursing  
University of Nebraska Medical Center, College of Nursing

**New Jersey**

Fairleigh Dickinson University, School of Nursing  
Monmouth University, School of Nursing  
Rutgers – The State University of New Jersey, School of Nursing  
University of Medicine & Dentistry of New Jersey, School of Nursing

**New Mexico**

New Mexico State University, College of Nursing

**New York**

Columbia University, School of Nursing  
Hunter College, College of Nursing  
New York University, School of Nursing  
SUNY at Stony Brook, School of Nursing  
Sage Colleges, School of Nursing  
University at Buffalo, School of Nursing  
University of Rochester, School Of Nursing

**North Carolina**

University of North Carolina-Chapel Hill, School of Nursing

**North Dakota**

University of North Dakota, College of Nursing

**Ohio**

Case Western Reserve University, School of Nursing  
Kent State University, College of Nursing

Ohio State University, College of Nursing  
University of Akron, College of Nursing

University of Toledo, College of Nursing  
University of Cincinnati (post-masters only, PMH for primary care)

**Oklahoma**

University of Oklahoma, College of Nursing

**Oregon**

The Oregon Health and Science University

**Pennsylvania**

Drexel University, College of Nursing and Health Professions  
Duquesne University, School of Nursing

Immaculata University, Department of Nursing

University of Pennsylvania, School of Nursing

University of Pittsburgh, School of Nursing

Widener University, School of Nursing

Wilkes University, Department of Nursing

**Rhode Island**

University of Rhode Island, College of Nursing

**South Carolina**

Medical University of South Carolina, College of Nursing (admissions suspended)

**South Dakota**

South Dakota State University, School of Nursing

**Tennessee**

East Tennessee State University, College of Nursing

University of Tennessee, College of Nursing

Vanderbilt University, School of Nursing

**Texas**

University of Texas Houston Health Sciences Center, College of Nursing

University of Texas at Arlington, School of Nursing

University of Texas Health Sciences Center-San Antonio, School of Nursing

**Utah**

University of Utah, College of Nursing

**Vermont**

University of Vermont, College of Nursing

**Virginia**

Hampton University, College of nursing

Shenandoah University, Division of Nursing

University of Virginia, College of Nursing

Virginia Commonwealth University, School of Nursing

**Washington**

Gonzaga University, School of Professional Studies

Seattle University, College of Nursing

University of Washington, School of Nursing

Washington State University, College of Nursing

Washington State University, Vancouver Campus, Intercollegiate College of Nursing

**Wisconsin**

University of Wisconsin-Madison, College of Nursing

University of Wisconsin-Milwaukee, College of Nursing

**Wyoming**

University of Wyoming, Fay W. Whitney, School of Nursing