



# NEWSLETTER OF THE INTERNATIONAL SOCIETY OF PSYCHIATRIC-MENTAL HEALTH NURSES

# CONNECTIONS

Volume 13 Issue 2

Summer 2010

## From the President - June 2010



Greetings to all ISPN members! I hope that your spring went well. I am pleased to have the opportunity to recap our Annual Conference, held in March in St Louis, review

our year, and discuss our plans for the coming years. To begin I wish to extend warm appreciation to the Conference Committee this year for organizing a stimulating and scholarly event. By all measures, the 2010 Annual Conference and Psychopharmacology Institute were a success. The feedback was that the speakers addressed issues of concern to our profession and forwarded the science of Psychiatric Mental Health (PMH) Nursing. If you would like to view the full program it is still posted on the ISPN website ([www.ispn-psych.org](http://www.ispn-psych.org)). Special thanks to the entire Conference Committee, chaired by **Edilma Yearwood**, with able assistance from co-chairs, **Nancy Davenport** and **Judy Hirsh**, and committee members (**Anita Dempsey, Sattaria Dilks, Peggy Dulaney, Sally Frese, Beverly Hart, Sally Raphael, Elizabeth Steinmiller and Rick Yakimo**). I also thank the co-directors of the Psychopharmacology Institute, Susan Krupnick and Evelyn Parrish and their committee, (**Judith Coucouvanis, Peggy Dulaney, Judy Hirsh, Geraldine S. Pearson, Diane Snow, Victoria Soltis-Jarrett, and Mary Weber**). At the Psychopharmacology Institute, the inaugural Susan Mc Cabe Lectureship was presented by

Our poster group is growing every year and it is proving to be a terrific vehicle for communicating the clinical work of our members.

Dr. Mary Weber, *Pharmacogenomics and Pharmacoeconomics: What Does Psychiatric Nursing Have to Do with This?* It was a wonderful look into our future and the role genomics will play. We also recognize abstract reviewers that had the difficult job of choosing the final roster of conference papers and posters. Congratulations to the 2010 Melva Jo Hendrix lecturer, **Dr. Charlotte Herrick** who presented a thoughtful history of PMH nursing and demonstrated how a return to our philosophical roots via the Interpersonal relationship provides a road map for our future.

At the conference we also recognize our colleagues at the Awards Ceremony. Please see the remarks by Dr. Rica O'Conner on the awards process and this year's recipients. I extend a special thank you to Rica for her years of service in organizing these awards. Another thank you goes to the chair of our Research Committee, Dr. Rick Yakimo and his work organizing and judging the posters. Our poster group is growing every year and it is proving to be a terrific vehicle for communicating the clinical work of our members. Another important event at the conference is the ISPN foundation dinner. The ISPN Foundation supports our research efforts with monies to PMH researchers. The foundation event is a major fundraiser and via contributions and the silent auction. The live portion of the auction was once again called by our own Peggy Dulaney who kept the crowd laughing as she raised significant monies for research. Finally, I extend a particular thank you to The Rees Group, Inc. – Plumer Lovelace,

Jane Shephard and Ashlie Davis, who keep every detail in mind as they execute the annual conference.

The annual meeting is a time to induct new board members. Our new President-elect is Victoria Soltis-Jarrett, and AGPN division director is Karen Ragaisis. We are pleased that Susan Krupnick will join us again as ISPCLN Director. Thanks to the nominating committee chair, Catherine Kane who organized this year's elections. Next year, Caroline McKinnon, Terry Sirota, and Peggy El Mallakh will join the nominating committee. We recognize the tremendous contribution of our past president, Geri Pearson and Merrie Kaas, a member of our nominating committee who will retire off the group.

At the conference, the Board met for several hours and reviewed our year, and identified priorities for the coming year. We continue to move along the strategic plan that was mapped out last year and is posted on the ISPN website. For those unable to attend the conference, I would



2011 Conference Update . . . . . 3  
From Marketing & Development . . . 3  
2010 ISPN Awards - St. Loius . . . . 4  
Division Updates . . . . . 5-8  
Why You Should Use the Threaded Discussion Forum . . . . 9  
Final Notes . . . . . 10

like to reiterate our progress last year on key initiatives.

**Unite and strengthen the presence of specialty psychiatric-mental health (PMH) nurses.** We increased national awareness of PMH practice, education and research by attending several policy shaping forums on mental health service delivery. A key meeting that ISPN was invited to attend was the National Forum National Action Meeting on Systems of Care Reform for Persons with Serious Mental Illness. It was organized by Ron Manderscheid and brought together psychiatric mental health professionals, consumers, directors of state departments of mental health professionals, administrators, and government officials. Over two days, the group identified several key recommendations on how to influence policy and thus alter the organization of care, reimbursement structure, and professional roles in a way that should result in better services and quality of life for adults with serious mental illness.

We had several collaborations with other Nursing organizations this year. They included several joint ventures with the American Psychiatric Nursing Association, completing the work of the Task Force studying the work of PMH APNs, particularly ones who treat children; the Task Force on Clinical Hours in a Combined CNS/NP PMHN Program, and our current collaboration around clarifying the PMH life span designation in the APRN Consensus Model. Thanks to Rica O'Conner who represented ISPN on the APNA Blended PMH programs task force. Collaboration with Pediatric Nurses included our participation at an invitational forum for pediatric nurses, *Strengthening our Future* hosted by the Pediatric Nursing Certification Board. The meeting focused on creating an action plan for assuring children receives the health care and health promotion services they needed. Collaboration with Pediatric nurses in Primary Care is an important bridge for building a workforce that will adequately address children's mental health needs at all levels of prevention. We continued our collaboration with the Emergency Room Nursing group. Via our collaboration with National Organization of Nurse Practitioner Faculties (NONPF) a group studied the issue of how PMH programs might meet requirements for NP programs as stipulated in *Criteria for Evaluation of Nurse Practitioner Programs*. We

continue to collaborate with the National Association of Clinical Nurse Specialists. Beth Bonham represented ISPN at the National NACNS summit where issues of CNS education and practice were discussed. An important collaboration is with the American Academy of Nursing (AAN) who vetted on ISPN web site PMH *Essential Psychiatric, Mental Health and Substance Use Competencies for the Generalist Nurse*. A second collaboration with AAN is the Geropsychiatric Nursing Initiative Project, steered by Victoria Soltis-Jarrett. These competencies are now posted on the ISPN website for your review.

**Promote equitable quality care for individuals and families with mental health problems.** ISPN's strong tradition of advocacy continues, two position papers were completed this year: Female Genital Mutilation [FGM]: Implications for health and Psychiatric Mental Health Nursing and advocating for the Needs of Children in Foster Care. Both of those papers can be found on the web. Thanks to members of the Diversity and Equity task force and ACAPN members for their work on these papers.

Originating from the Education council, a task force has recently completed their work on a White Paper focused on Educational Preparation of Advanced Practice Nurses who treats Children with Mental Health Needs. This was a collaborative effort with APNA. With the anticipated growth of life span PMH nursing graduate programs, this paper will provide needed guidance to faculty. We extend thanks to Margaret Brackley who steered this task force for the last year. This paper is now posted on the ISPN website.

**Enhance the ability of PMH nurses to work collaboratively on issues facing the profession.** We focused this year on developing platforms for information sharing among ISPN members. Our new members-only discussion forum was launched early this year. We anticipate that this will be an excellent avenue for raising issues and moving them into initiatives. Connections news letter has a great new look. Our new editor, Beverly Hart, has done a wonderful job of gathering and organizing organization news. We also focused on strengthening ISPN's committee/council structure and

created two task forces to help us with infra-structure issues. Our first new task force, Marketing and Development task force has worked tirelessly to identify and pursue alternative funding streams for the organizations, including grants and sponsorships. We extend our sincere thanks to Peggy Dulaney for her leadership on this task force and her team that have worked throughout the year. Our second new task force has been the Web Site Committee. You have all seen the amazing results of their efforts to update and reorganize the ISPN web page. In addition they have set web policies and helped us set a future direction for using the web page as an information and planning tool. We extend our appreciation to the chair of this task force, Carolyn Castelli, who together with her team has maintained an amazing focus on this revision and renovation.

ISPN has also been active with the APRN/LACE consensus group. In summer ISPN surveyed our members about the APRN consensus model, and in line with feedback, endorsed the APRN consensus model; a regulatory model which aims at organizing and standardizing Licensure, Accreditation, Certification, and Education. In our endorsing letter, ISPN expressed concerns around implementation issues, particularly the intent that in a rather short time all PMH graduate programs would become develop curriculum that covered the life span. There was a LACE meeting this January where we voiced these concerns. In January we also entered into discussion with the American

ISPN's strong tradition of advocacy continues, two position papers were completed this year... FGM & the Needs of Children in Foster Care.

Psychiatric Nurses Association (APNA) to join their newly forming task force and examine the life span issue. You all received emails about this partnership. A task force has been formed and is on-going. We thank Dr. Mary Jo Regan-Kubinski for leading and organizing the group who will represent ISPN on the task force. A report of that Task Force is forth coming, please be alert to this message as it contains important ramifications for education in the specialty.

**Impact healthcare policy to facilitate effective use of human and financial resources.** We have set a goal of increasing ISPN's involvement in national quality, consumer and work force committees. Edilma Yearwood continues

to represent ISPN on the National Quality and Safety Alliance. Karen Robinson will be focusing on this goal this year via her work with the newly reformed Legislative Council. Karen is our representative with a group organized by the American Association of Colleges of Nursing, termed Nursing Community. Throughout the year this group penned letters to congress around issues of Health Care Reform and funding of nursing education. I have recently joined the American College of Mental Health Administration and hope to represent PMH nursing and ISPN at the upcoming meetings. Ron Mandersheid is the next president of this organization and has expressed interest in increasing PMH nursing presence in discussion.

As our year begins the board looks to several new initiatives and hope to enlist new leaders within the organization. We plan on organizing a section of the web site for resources we believe educators, researchers and clinicians will find useful in their practice. ISPN remains active on several groups that are crafting competencies for graduate education. A major goal is to be responsive to the needs of members so we encourage you to post comments on the threaded discussion and let us know your concerns. Looking forward to a great year.

**Kathleen Delaney, PhD, PMH-NP**

## 2011 Conference Committee Update

As I sit and write this I realize how fast time is slipping by! The annual conference is three months behind us, I am now the chairperson after 2 years on the committee and I am without the guidance of Dr. Edilma Yearwood. Thank you Edilma for all your leadership and hard work in making the last two conferences so successful.

The re-energized 2011 conference committee has gotten to work early to insure that the upcoming conference is state-of the art, exciting, and enjoyable! The Psychopharmacology Institute will be one and a half days, the afternoon of Tuesday, March 29 through Wednesday, March 30. The annual conference, "The Art, Science and Diversity of Psychiatric Nursing" will begin Wednesday evening March 30, 2011, with the opening reception. The resort in Arizona looks wonderful and boasts many amenities such as golf, tennis, spa, multiple swimming pools and water slide. It will be a great retreat or vacation and opportunity for self-care!

Our 2011 speakers bring skill and diversity in applying the art and science of our specialty. We will have the ISPN 2010 Diversity Award winner, Dr. Laura Hein from South Carolina as a plenary. Dr. Bernadette Melnyk from Arizona State

University will be another plenary and the keynote will be given by Elena Avila, MSN, from New Mexico. Ms. Avila is an APRN in Psychiatric Nursing with a specialty in Mexican folk healing, Curandismo. The 2010 Melva Jo Hendricks award winner, Dr. Beth Bonham will also be presenting. These speakers, in combination with the concurrent and poster sessions, will energize and remind us that our specialty area applies nursing science skillfully and innovatively with diverse populations and in various settings. There will also be time for informal focused discussions about controversial healthcare practice issues, networking with old and new colleagues, shopping in the exhibit hall and relaxation. The committee has members affiliated with both schools of nursing at Arizona State University and the University of Arizona, so I'm sure that there will be opportunities to meet and network with our Arizona colleagues.

As the new committee continues to work hard to accomplish our goals and incorporate the suggestions made last year by attendees, I hope that you plan to attend!

Hoping to see you at the 2011 conference, **Judy Hirsh, NP-P., PMHCNS, BC., RPT-S.**

## From the Marketing and Development Committee

### CHANCE TO WIN A \$25 GIFT CARD

Planning for the March 29 - April 2, 2011, ISPN Psychopharmacology Institute and Annual Conference to be held at the Westin LaPaloma Resort in Tucson, AZ is well underway and many exciting professional opportunities for continuing education and networking are being prepared for attendees. We hope you are already making plans to attend the conference.

**OPPORTUNITY** - We would like to offer our members an opportunity to help us plan this exciting conference by identifying potential vendors and sponsors. We want this conference to be the "best ever" in this wonderful location. If you know someone who would enjoy being an exhibitor at the

conference or who would be interested in sponsoring a meal, break, or reception, please let us know.

If you can identify pharmaceutical company contacts, vendors, alternative therapy services, recruiters, psychiatric mental health care companies, etc. that would love to share their services or products with conference attendees, please email their names and contact information (company, contact name, phone numbers and email) to Peggy Dulaney, Chairperson of Marketing and Development Committee, [pdulaney@bellsouth.net](mailto:pdulaney@bellsouth.net).

**\$25 GIFT CERTIFICATE** - To thank you for your assistance, ISPN will enter the name of each person providing this

contact information in a drawing for a \$25 gift certificate. One entry will be given for each suggestion with full contact information included.

**BOOK SIGNINGS** - We would also like to share your successes and want to know if you have published a book in the past year or will be publishing one by the spring conference. We would like to extend an opportunity for you and your publisher to offer a book signing at the conference. We can provide details if you are interested in this activity to promote your book and share it with ISPN members and conference attendees.

Please feel free to contact **Peggy Dulaney** ([pdulaney@bellsouth.net](mailto:pdulaney@bellsouth.net)) if you have any questions or suggestions.

**A** CAPN Award was given to Ellen Rindner, a Kansan who has been an ACAPN member since 1985. Ellen divides her time among three jobs: adjunct faculty for an on-line program to teach assessment of youth depression, and an ARNP with two behavioral health agencies, including one that uses telepsychiatry to provide specialty services to underserved children and youth. Ellen has strong knowledge of child mental health conditions in the context of broader health; she is a tireless nurse educator and provider offering outstanding service to SED children, adolescents, and parents in KS and MO. Finally, Ellen works each year at Medical Cabin at Camp Encourage, an overnight camp where children with Autistic Spectrum Disorders have the opportunity to experience the “normal pleasures” of summer camp.

ISPCLN Award was awarded to Susan Krupnick, who hails from Massachusetts. Susan’s career spans several decades, with roles that range from staff nurse to Psychiatric/Addictions Nurse Consultant and Nurse Practitioner. Susan was a founding member; initially of ISPCLN and then of ISPN. She was elected the first ISPN president in 1999. Susan’s commitment to our organization’s development and continued success is extraordinary. She takes on the burdens of leadership that many decline and excels beyond our collective expectations. She shines the spotlight on others’ contributions, inspiring their leadership in the process.

SERP / Chamberlain Award acknowledges Ruth Beckmann Murray, professor emerita from the St. Louis University School of Nursing. She devoted 42 years to nursing education, coordinating the St. Louis University PMH graduate program for 20 years. Dr. Murray’s career included a tenacious focus on the welfare of people with serious mental illness, in particular those who were homeless or at immediate risk. She is a founding member and continuing resource for the St. Patrick Center, a local agency for people who are homeless. She also served as a mental health counselor. She is acknowledged for forming generations of health care workers and is noted as one of the most beloved teachers in the long history of the St. Louis School of Nursing.

ISPN Education Award honors Jean Klein, who is a professor at Immaculata College in Pennsylvania. Jean is widely acknowledged as a gifted teacher. She consistently receives outstanding teaching evaluations from both undergraduate and graduate students. She uses creative teaching strategies, such as gaming and current movies or TV shows to help undergraduate students learn about MH disorders. She is developing a collaborative investigation of faculty evaluation

of particular teaching strategies. Current and former students have come to rely on her as one who readily responds to requests to review materials or plans and provides advice and coaching to help them achieve their goals.

ISPN Diversity/Equity Awardee is Laura Hein from the University of South Carolina. Laura has worked to educate the members of our organization and the larger mental health community about the unique needs and plight of lesbian, gay, bisexual and transgender youth. In her presentations and publications, what comes through is her passionate advocacy for this vulnerable population, and her eagerness to help other health care providers become more aware and sensitive to their plight. She has been asked to guest lecture on LGBT culture, health issues, ethics, homelessness, gender identity, and transgender health in several colleges at the University of South Carolina. Laura has conducted several studies with LGBT youth, investigating family dynamics, survival strategies and resiliency, and is beginning to develop a methodology that, if shown to be successful, will enable LGBT centers across the country to help empower victims of LGBT hate crimes.

ISPN Melva Jo Hendrix Award winner, who will be a featured presenter next year, at the 2011 conference, is Elizabeth Bonham, from the University of Southern Indiana. Beth has dedicated her career to addressing, caring for and building more effective treatment programs for vulnerable and marginalized children and adolescents, and their families. Beth developed and became the founding director of the Family Support Services Program within the Indiana Juvenile Justice system. This program effectively reached out to rural communities with high rates of violence and crime, and limited resources to address the needs. Beth partnered with Melva Jo Hendrix in the establishment of ISPN, a significant contribution to the continuing development and strength of psychiatric-mental health nursing. Further, Beth is noted to be an extraordinary mentor who benefits both students and colleagues by fostering understanding, creativity and confidence.



Hello ACAPN Colleagues!

**W**e had a wonderful Annual Conference in St. Louis, MO this year. We were especially enriched with the presence of colleagues from Australia, Japan, the Netherlands, and Canada. New ACAPN members attended the Membership Breakfast, as well as participated in the conference by presenting their practice and research via posters and paper presentations. It is exciting to see more child and adolescent psychiatric mental health nursing research and evidence-based practice presented at the Annual Conference. I hope that you are able to disseminate your work in other venues as well so that people...legislators, health care providers, neighbors, etc...understand the value of the Child/Adolescent PMH Clinical Nurse Specialist.

We offer heartfelt congratulations to **Dr. Ellen Rindner** of Lenexa, KS who received the 2010 ACAPN Division Award at the Annual Awards Ceremony. Ellen received the award for her longtime advocacy as a nurse educator, advanced practice nurse, and administrator in various settings. We also congratulate this year's winner of the Melva Jo Hendrix Lectureship Award and a longtime member of ACAPN, **Dr. Charlotte Herrick**. Her historical and personal presentation about psychiatric nursing and its evolution was inspiring, poignant, and eloquent.

The 2010 ACAPN Division Business Meeting was well attended with 26 members. Goals were reviewed for the 2010-2011 year and include:

- Increase visibility of ACAPN to the public
- Increase communication among members
- Represent mental health issues, especially of children, adolescents and families at different public venues

I hope you are thinking about planning to attend the 2011 ISPN Psychopharmacology Institute and Annual Conference in Tucson, AZ. The conference will be at the Westin LaPaloma Resort in Tucson. Having the conference in Tucson from March 29 through April 2 will be a beautiful time to see the Sonoran Desert and my previous hometown. The call for abstracts is on the website...we want to hear what you are doing in terms of "The Art, Science and Diversity of Psychiatric Nursing!"

Two important papers that ACAPN members participated in writing are now published on the ISPN website. ISPN's *Position Statement of Foster Care* was written by Sally Raphael, Dr. Charlotte Herrick, and Dr. Pamela Galehouse. *The Educational Preparation of Advanced Practice Nurses to Address the Mental*

*Health Needs of Children and Adolescents* was an ISPN and APNA collaborative effort ably chaired by ISPN and SERPN member Dr. Margaret Brackley. ACAPN members included Kathleen Delaney, Janeice DeSocio, Vanya Hamrin, and Mark Soucy. We greatly appreciate the time and clinical expertise our members donate to special projects. THANK YOU!

The ISPN website is updated and is a resource for you as is the NEW Threaded Discussion Forum. Please take a moment to view all the sources that are now technologically available to you. You might have noted that periodic e-blast communications are sent to you about issues germane to our Division as well as to ISPN. I hope you find these memos informative. An interesting sidebar about the electronic resources now available: in June, as a member of the Content Expert Panel, I attended an ANCC Child/Adolescent PMH Role Delineation Study meeting. Ten participants who practiced child and adolescent psychiatric mental health nursing attended. I was the only ISPN member. One attendee had downloaded from the ISPN website and brought with her as a reference the *Practice Parameters for Child and Adolescent Inpatient Psychiatric Treatment*. (And yes, I did inform the group about ISPN and handed out membership brochures!)

On a final note, ***I need your help in two ways***. First, I have a list of former ACAPN members who, for whatever reason, did not or could not renew ISPN membership. We miss them! I have some ideas on how to contact people but I would like your input as a member. What strategies do you think we need to use to contact previous members? What do we need to do to increase ACAPN membership? Secondly, there are reasons that you maintain your membership. I would love to hear some of those reasons. Could you please tell me what they are? In conclusion, the two things I need from you are: 1) strategies for reconnecting previous members and, 2) the reasons why you are an ISPN/ACAPN member. Please feel free to inform me of your concerns and/ or questions too. You can email me at bethbonham@coopsone.com I would love to hear from you.

Warm regards!

Beth

**H**ello, my name is Karen Ragaisis and I've been a member of AGPN since its inception in 2003. I'm currently employed as a nurse practitioner in the Psychiatric Emergency Services Unit in the Emergency Department at Hartford Hospital, Hartford, CT. My role also includes consultation-liaison coverage service for the Department of Psychosomatic Medicine. I'm so excited to have been elected as the new AGPN Division Director! Special thanks go to the directors preceding me for they have capably guided our growth while providing expert leadership. I am grateful for the foundation they've created.

If this is the first time you're reading Connections – welcome to AGPN! The mission for our division is to identify, disseminate, and grow the unique body of knowledge that constitutes the scientific foundation for advanced practice psychiatric-mental health nurses who provide mental health care for adults, the elderly, their families, and communities. AGPN accomplishes this mission by providing the following services to its members:

- A forum for the exchange of professional knowledge from the field of psychiatric nursing, as well as welcoming the collegiality and collaboration that comes from utilizing the clinical, research, and theoretical perspectives of other mental health and general health professionals to promote the mental health of adults, the elderly, families, and the community.

- A unified and strong voice representing advanced practice adult and gero-psychiatric nurses.
- Organizational liaison with other advanced practice psychiatric mental health nurses through membership in ISPN.

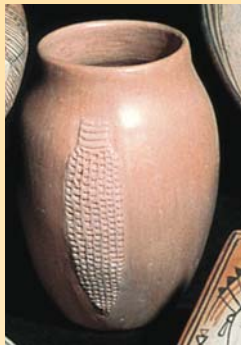
Don't forget to check out the ISPN website! The Geriatric Competency Enhancements for Psychiatric Nurse Practitioners and Mental Health Clinical Nurse Specialists are available for your review. Please look these over and post any comments in our threaded discussion forum. The enhancements are a resource to support the care of geriatric patients and define the needed knowledge and skills (entry level to advanced practice) to address care of geriatric patients with psychiatric and/or substance misuse disorders.

My final comment is regarding my interest in spreading the word about ISPN/AGPN to existing advanced practice psychiatric nurses and those still in graduate school. One way to do this is via social networking. You can find me at [www.Facebook.com/KarenR.aprn](http://www.Facebook.com/KarenR.aprn). The ISPN threaded discussion forum is another way for members to connect and explore any issue or question that they have regarding their practice. I'm looking forward to meeting (online or in person) you!

~ Karen Ragaisis, MSN, APRN, CARN, PMHNP-BC  
AGPN Division Director

**SAVE THE DATE!**

## 4th Annual Psychopharmacology Institute and ISPN 13th Annual Conference



### The Art, Science and Diversity of Psychiatric Nursing



March 29 - April 2, 2011  
Westin LaPaloma Resort  
Tucson, Arizona USA

Hello ISPCLN Division Colleagues;

I hope that you are enjoying the summertime and balancing some fun time with your most important work time. I am still rejuvenated from attending the ISPN Psychopharmacology Institute and Annual Conference in St. Louis this year. I would like to share some of the highlights with you of presentations that I attended that simply reinforced the incredible clinical, educational and research work that PCLN's do everyday.

## **2010 Psychopharmacology and Annual Conference Highlights**

Dr. Mary Weber's presentation of the Susan McCabe lectureship was phenomenal to say the least. Mary captured the essence of Susan McCabe in some personal pictures while captivating the audience on her interesting and cutting edge topic titled "Pharmacogenomics and Pharmacoeconomics: What Does Psychiatric Nursing Have To Do With This?" Well, Dr. Weber eloquently, and with humor interspersed, educated the audience about these two important areas of healthcare knowledge and took the participants on a journey to new knowledge. Her presentation propelled the participants into the reality of healthcare in the present and future, and launched another very successful Psychopharmacology Institute. The general and concurrent sessions were equally illuminating and hard to decide which concurrent to attend. Once again the prescribing panel presentations were a time of intriguing and challenging cases being offered to the panelists and robust discussions by both the panelists and participants. It was a truly wonderful exchange of ideas and approaches to these complex clinical situations.

During the annual conference I was intrigued by the session that Noreen Thompson presented on working with patients who have pseudo non-epileptogenic seizures (PNES); her work as a PCLN with these patients, families and their associated health care providers certainly illuminated the comprehensive work of her PCLN practice and provided the participants with concrete strategies to utilize with this interesting and often complex patient population. Additionally, Dr. Jean Klein did a wonderful job in her session presenting her research about the involvement of her as a PCLN and researcher in the utilization of relaxation techniques in caring for patients with burn injuries. These were only two of the psychiatric consultation related presentations that I attended and wanted to share with you—there were so many exceptional presentations. So I am hoping you will make certain to be at the 2011 Psychopharmacology Institute and Annual Conference to participate in the excellent presentations that are relevant to our daily practices as PCLN's.

## **13th Annual ISPN Conference and 4th Annual ISPN Psychopharmacology Institute**

Start planning to attend the 13th Annual ISPN Conference and 4th Annual ISPN Psychopharmacology Institute. The annual conference will again be preceded by the 4th Annual ISPN Psychopharmacology Institute, March 29 to April 2, 2010. Judith Hirsh and Evelyn Parrish and their planning committees are already hard at work planning the educational events that will be hosted in Tucson, Arizona. The hotel is a lovely resort environment that I have stayed at for some rest and relaxation while visiting a friend in Tucson. So be prepared to learn, network and recharge during your stay.

## **PCLN's Providing Compassionate Care in Haiti**

I want to extend my sincere appreciation to all the PCLN's who worked on the behalf of the Haitian communities in the United States and the citizens of Haiti, in the many endeavors that helped support them both directly and indirectly. I know that many of you have been and continue to assist our healthcare colleagues as they re-enter their systems "back home," as these individuals have been and will continue to be affected and require our support.

## **Resources for your practice as PCLN's**

I continue to come across resources that might be of interest to PCLN's in addressing complex patient presentations in various care settings. I would like to share these resources with you, they include:

The Clinical Manual of Emergency Psychiatry (2010) by Riba and Ravindranath and published by the APA Press is an excellent resource for anyone practicing or consulting in the emergency department, while also providing information about emergency and initial assessment across the age and illness spectrum.

Another resource I have recently added to my list is Somatic Presentations of Mental Disorders—Refining the Research Agenda for DSM V; again this is an APA publication and aids in understanding the next wave of diagnostic criteria and thinking related to these complex patient presentations that are frequently encountered on psychiatric consultation services and in outpatient medical psychiatry services.

I am always looking for good resources so I would like to hear from the PCLN division members about articles you have written, a novel practice that you are involved in or any resources that you have utilized and found to be beneficial to your knowledge. Please send along any resources to me that

I can include in future messages or e-blasts to our colleagues to assist us in our daily practices. Also, remember as an ISPN member you can order books via the ISPN website – books portal and receive a member discount!

### Communicating with Division Members

I will continue to use the ISPN e-blast to communicate in an expedient manner with members when issues arise that need a more rapid response. The ISPN e-blast system can also be used to communicate issues that you may have and want to communicate with your PCLN colleagues, so please send along messages to me directly at [Skrupnick@charter.net](mailto:Skrupnick@charter.net) or

send to the office and they will be forwarded to me. I can also be reached at 1-508-248-7108 or my cell phone at 1-508-826-6208.

Looking forward to hearing from you – and hopefully meeting you at the 2011 ISPN Psychopharmacology Institute and 13th Annual Conference in Tucson, Arizona at the Westin LaPaloma Resort, from March 29 to April 2, 2011.

Warmly,

Susan Krupnick, MSN, PMHCNS-BC, ANP, CARN  
ISPCLN Division Director

## SERP Division Update

Linda Rose, PhD, RN  
[lrose2@son.jhmi.edu](mailto:lrose2@son.jhmi.edu)

**G**reetings to all SERPN members! As I write this, many of you are in the midst of summer vacations while some are conducting “business as usual” in spite of the heat! I would like to share with you some recent developments from the Division and also some accomplishments of some of our SERPN members.

For those of you who were able to attend the Annual ISPN conference in April, you heard Mary Jo Regan-Kubinski update us on the status of the LACE (Licensing, Accreditation, Certification, Education) document. As you recall, she noted at the time that this document was endorsed by ISPN and it has tremendous importance for all psychiatric advanced practice nurses, as well as the educators in the APN programs across the country. Mary Jo continues to represent us at LACE meetings/discussions. As a member of the ISPN-APNA LACE Steering Committee, she has reported to the ISPN Board that the dialogue is continuing, and we (psychiatric nursing representatives) are indeed at the table. As the LACE recommendations move toward implementation, we will keep you informed of all developments. Check the SERPN column in the *Archives of Psychiatric Nursing Journal* for updates.

Several important documents have been produced recently that relate to the educational focus of SERPN. First, the ISPN White Paper from the Educational Task Force on the preparation of APNs addresses the mental health needs of children and adolescents. Dr. Margaret Brackley chaired this task force and we are grateful for her leadership in this important area. The White Paper is now available on the ISPN website for your review. Second, gero-psychiatric competencies for clinical nurse specialists and nurse practitioners have been developed. Dr. Victoria Soltis-Jarrett recently provided background information and updates on this document to the Board; Board members supported the decision to post this information on

the ISPN website. A link is provided for members to post comments on the contents of this document. I encourage you to share your thoughts and reactions.

What’s next? Check back to the SERPN website in the coming months for a new resource – we expect to have a link to a resource page for members interested in conducting research on psychiatric nursing issues. This link will include useful information about grant writing and funding opportunities for your projects. Materials presented at the Annual Conference related to this topic will be added, including the PowerPoint slides from both the keynote presentation by Dr. Debbie Gross and her session on grant writing. I hope that ISPN members in general and members of SERPN in particular, will find this new resource useful. As always, your comments and suggestions on how best to serve the membership of SERPN are most welcome.

In closing, I want to recognize the accomplishment of several of our member who was elected as fellows to the Academy of Nursing this year: Kathleen Delaney, Nancy Hanrahan, and Patricia Howard. Congratulations! It is indeed a testament to the stellar work that they do as psychiatric nurses and we are proud of them. We also want to congratulate Margaret Brackley who was elected as a fellow to the American Academy of Nurse Practitioners. Congratulations Margaret!

Please do not hesitate to contact me if you have any questions or comments about the topics I have presented. It is my privilege to serve as your Director and I welcome dialogue on issues that affect you.

~ Linda Rose, PhD, RN  
SERPN Division Director



## Why You Should Use the ISPN Threaded Discussion Forum

Several months ago, after many discussions and much consideration, ISPN pressed forward with the plan to implement a threaded discussion forum. This was a huge accomplishment for the association and the acquisition of an extremely useful tool for the ISPN membership.

Today, six months after the initial “go live” date many of our association members still have not used the threaded discussion software. For some, it may be a matter of not having enough time. For others it may be the question of “what do I do within a threaded discussion environment?”

Unfortunately, I cannot help members with time management (I can recommend a few books). However, I can help people get involved by suggesting some very tangible uses for our threaded discussion forum.

### What is a threaded discussion forum?

A threaded discussion, otherwise known as a message board, discussion board or forum is essentially a place where one person can start a discussion (thread) by posting a comment. Other people can then reply directly to this comment with their own comments. Further, other users can then reply to those replies and so forth. Thus, through the messages and replies an entire conversation can be built upon the comments and reactions of the students to each others postings, essays and papers.

The threaded discussion software environment can be customized to create over-arching topics. These topic headers provide a context for comments and information posted by participants. Examples of key topics that may be engaging for ISPN members include 1) annual conference updates, 2) industry resources, and 3) career opportunities.

Visitors use the over-arching topics to ask questions and generate related discussions amongst each other. Generally related discussions can spin off to create new discussions and discussion topics.

Additionally, threaded discussion software can be integrated into other projects. For example, live, in-person discussions can be extended and continued in-depth online in a threaded discussion forum. Threaded discussions can be used to plan and prepare for future live, in-person discussions. In this way, members are able to gather ideas from each other on a topic before attending the in-person meeting.

Threaded discussion software has also been used successfully as a project management tool. A written project proposal can be posted online. Afterwards, participants can ask questions about the plan or post suggestions and comments to improve and enhance the plan.

### What is required to participate?

The threaded discussion forum is available for all ISPN members. The only requirement is that participants establish a username and password in order to fully experience the software.

### How do I get started?

The ISPN Central Office offers monthly online training classes, which provide guidance and help you get started. To add your name to the list of attendees, contact your ISPN Membership Coordinator, Ashlie Davis at [adavis@reesgroupinc.com](mailto:adavis@reesgroupinc.com) or 866 330-7227.

~ Plumer Lovelace, Executive Director



**D**id you attend the 2010 ISPN Psychopharmacology Institute and Annual Conference that was held in St. Louis this past April? If not, you missed an exciting networking and educational event! Over 200 advanced practice nurses attended the Annual Conference and approximately 100 professionals attended the Psychopharmacology Institute that preceded it.

Presentations and posters focused on evidence-based psychiatric nursing practice, translational science, safety, quality, psychopharmacology, policy, culture, health equity, complementary and alternative treatments and innovative practice models for individuals, families, groups, and communities across the lifespan. Social events allowed plenty of time for networking and catching up with friends and colleagues. It was a busy week!

The ISPN Foundation hosted a reception and live auction on Thursday evening. Over 70 colleagues participated in this fun evening of auctioning and networking. Peggy Dulaney, the official auctioneer, kept the bids coming in all evening! In total, the Foundation raised \$2312 to benefit a variety of their activities.

Thanks to the exhibitors that supported our program this year:

Eastern Kentucky University ([www.eku.edu](http://www.eku.edu))  
Elsevier, Mosby, Saunders  
Humane Restraint Co., Inc. ([www.humanerestraint.com](http://www.humanerestraint.com))  
Merck & Co., Inc. ([www.merck.com](http://www.merck.com))  
NAMI St. Louis ([www.nami.org](http://www.nami.org))  
Pinpoint, Inc. ([www.pinpointinc.com](http://www.pinpointinc.com))  
University of Kentucky College of Nursing  
([www.mc.uky.edu/nursing](http://www.mc.uky.edu/nursing))

And special thanks to the planning committees that worked so hard on both programs!

#### Conferences Committee

Chair: Edilma L. Yearwood, PhD, RN, PMHCNS-BC, FAAN  
Nancy Davenport, MSN, RN, CNSPMH, LPA-BC  
Anita Dempsey, PhD, MSN, RN, PMHCNS-BC  
Sattaria Dilks, DNP, PMHNP  
Peggy Dulaney, MSN, RN, PMHCNS-BC\*  
Sally Frese, MSN, APRN-BC\*  
Beverly Hart, PhD, RN, PMHNP  
Judy Hirsh, MSN, NPP, PMHCNS-BC\*  
Sally Raphael, MS, APRN, PMH, FAAN\*  
Elizabeth Steinmiller, MSN, APRN-BC, PMHCNS-BC  
Rick Yakimo, PhD, PMHCNS-BC\*

\*Co-Chairs

#### Psychopharmacology Institute Planning Committee Members

Susan Krupnick, MSN, PMHCNS-BC, ANP-BC, CARN  
Evelyn Parrish, PhD, RN, APRN

#### Co-Directors

Judith Coucouvanis, MA, APRN-BC, PMHCNS-BC  
Peggy Dulaney, MSN, RN, PMHCNS-BC  
Judy Hirsh, MSN, NPP, PMHCNS-BC  
Geraldine S. Pearson, PhD, PMHCNS-BC, FAAN  
Diane Snow, PhD, APRN-BC, PMHNP-BC, CARN  
Victoria Soltis-Jarrett, PhD, PMHCNS/NP-BC, FAAN  
Mary Weber PhD, APRN, PMHNP-BC

Be sure to mark your calendars for the 2011 ISPN Psychopharmacology Institute and Annual Conference on March 29-April 2 at the Westin La Paloma Resort in Tucson, Arizona. Visit the ISPN website at [www.ispn-psych.org](http://www.ispn-psych.org) for more information as it becomes available.

~ Jane Shepard, Meeting Planner



# Governing Board and Leadership Team

## OFFICERS

### President

Kathleen Delaney, PhD, PMH-NP  
E: Kathleen\_R\_Delaney@rush.edu

### Secretary/Treasurer

Judith McComish, PhD, RN  
E: jcmccomish@wayne.edu

## DIVISION DIRECTORS

### ACAPN

Elizabeth Bonham, PhD, RN, PMHCNS-BC  
E: bethbonham@coopsone.com

### AGPN

Karen Ragaisis, MSN, APRN, CARN, PMHNP-BC  
E: kragaisis01@snet.net

### ISPCLN

Susan Krupnick, MSN, APRN-BC, CARN  
E: skrupnick@charter.net

### SERP

Linda Rose, PhD, RN  
E: lrose2@son.jhmi.edu

## COUNCIL CHAIRS

### Practice Council

Richard Pessagno, MSN, APRN-BC  
E: rickpessagno@aol.com

### Education Council

Margaret Brackley, PhD, APRN-BC  
E: brackley@uthscsa.edu

### Legislative Council

Noreen C. Thompson, MSN, RN, CS, ARNP  
E: nthomps2@kumc.edu

### Research Council

Richard Yakimo, PhD, RN  
E: ryakimo@siue.edu

# ISPN-Foundation Board of Directors

### President

Kathleen Scharer, PhD, APRN-BC, FAAN  
E: Kathleen.scharer@sc.edu

### Members

Carolyn Castelli, MSN, APRN-BC  
E: cjc9001@nyp.org  
Peggy Dulaney, MSN, RN-BC  
E: pdulaney@bellsouth.net

Irva Faber-Bermudez, APRN-BC

Priscilla Lynch, MS, RN  
E: priscilla\_lynch@rush.edu

Susan Vebber, BSN, RN  
E: susanvebber@juno.com

Roberta Waite, EdD, MSN, RN, CS  
E: rlw26@drexel.edu



## International Society of Psychiatric-Mental Health Nurses

2424 American Lane, Madison WI 53704-3102 USA

Phone: 1-608-443-2463

Toll-free: 1-866-330-7227

Fax: 1-608-443-2474

Email: [info@ispn-psych.org](mailto:info@ispn-psych.org)

Website: [www.ispn-psych.org](http://www.ispn-psych.org)