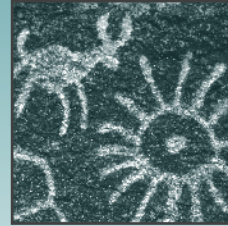
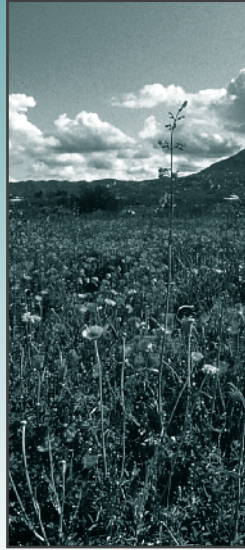
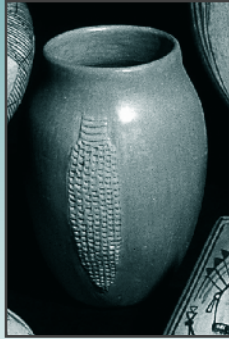


4th Annual Psychopharmacology Institute and ISPN 13th Annual Conference

The Art, Science and Diversity
of Psychiatric Nursing

March 29 - April 2, 2011
Westin LaPaloma Resort
Tuscon, Arizona USA



**International Society of
Psychiatric-Mental Health Nurses**
2424 American Lane
Madison WI 53704-3102 USA
Phone: +1-608-443-2463
Fax: +1-608-443-2474
E-Mail: conferences@ispn-psych.org
Website: www.ispn-psych.org





Annual Conference Preliminary Program
The Art, Science, and Diversity of Psychiatric Nursing

Introduction

The 2011 Conferences Committee and ISPN Board of Directors hope to welcome you to the Annual Conference in the southwestern city of Tucson, Arizona. It is fitting that the Conference theme this year, *"The Art, Science and Diversity of Psychiatric Nursing,"* is hosted by the state's second oldest city, one that dates back to the 1700's and offers historic sites from Native American, Spanish, Mexican and the old west cultures. The Conference themes are evident in the keynotes and plenary sessions, poster and concurrent sessions. Presentations include Mexican folk healing blended with psychiatric nursing, complementary and alternative healing techniques, a writing for publication workshop, evidence-based practice by a leading authority on the subject, global diversity issues, informal discussion groups on timely topics affecting psychiatric nursing, cutting-edge scientific research and educational methods, as well as an interactive panel on the LACE model for licensure, accreditation, credentialing and education. The Melva Jo Hendrix award was presented last year to Dr. Beth Bonham, who will inspire us with her presentation this year on *"Transformation in Psychiatric Mental Health Nursing"* during our ISPN awards ceremony. Now would be an excellent time to nominate an outstanding colleague for an ISPN award. There are several options which can be found on the ISPN website (www.ispn-psych.org).

Some of last year's attendee comments were incorporated into the overall program. This year we are awarding more contact hours than in prior conferences for attendance at poster sessions and focused issues groups. We were mindful in allowing time to relax and enjoy yourself at the Westin LaPaloma Resort, nearby old western towns, nature preserves, parks and Tucson's historical and cultural sites. For networking, making new connections, and establishing new collaborations, plan to attend the Opening Reception, Foundation reception and fundraisers. Visit the exhibit hall often to talk with poster presenters and vendors.

We look forward to meeting you for the first time or seeing you again at another invigorating ISPN event this year at the Westin La Paloma Resort & Spa.

Adios,

Judith Hirsh, NP-P, PMHCNS-BC, RPT-S
Conference Committee Chairperson

Who Should Attend

- All professional nurses who practice, teach, conduct research or study in the specialty of psychiatric-mental health nursing.
- All professional nurses who by practice, advocacy or research, dedicate their time to assisting patients and families dealing with mental illness.

Conference Objectives

- Describe evidence of current research and outcomes in mental health treatment of individuals, families and groups across the lifespan.
- Generate health care policy recommendations to support comprehensive and improved quality of care for individuals in need of mental health services.
- Discuss educational initiatives and strategies for increasing the knowledge and skills of educators, practitioners and nursing students in psychiatric/mental health nursing.
- Describe cutting-edge initiatives that address issues of cultural diversity in education, practice, and nursing research.
- Utilize the conference forum as a method to promote discussion, planning and problem-solving of key issues affecting psychiatric/mental health nursing, health care policy, advocacy, global health, international collaboration, and mental health initiatives across the lifespan.
- Provide opportunities for professional development, networking, mentoring, and collaboration between domestic and international partners.

Conferences Committee

Judith Hirsh, NP-P, PMHCNS-BC, RPT-S, Chair
Carol Baxter, APN, PMHCNS-BC
Nancy Davenport, RN, MSN, PMHCNS-BC, LPA
Anita Dempsey, PhD, RN, MSN, PMHCNS-BC
Peggy Dulaney, MSN, RN
Sally Frese, MSN, APRN-BC
Cynthia T. Handrup, DNP, APRN, PMHCNS-BC
Beverly Hart, PhD, PMHNP
Sara Horton-Deutsch, PhD, CNS
Pamela Lusk, DNP, RN, FPMHNP-BC
Judith Nolen, RN, BC, MS
Evelyn Parrish, PhD, APRN
Sandra Tate, APN, CS

Abstract Reviewers

Carol Baxter, APN, PMHCNS-BC
Judy Coucouvanis, MA, APRN-BC, PMHCNS-BC
Linda D'Erminio, MSN, APRN, CNS-BC
Nancy Davenport, RN, MSN, PMHCNS-BC, LPA
Anita Dempsey, PhD, RN, MSN, PMHCNS-BC
Sattaria Dilks, DNP, PMHNP
Carla J. Groh, PhD, RN
Cynthia T. Handrup, DNP, APRN, PMHCNS-BC
Beverly Hart, PhD, PMHNP
Judith Hirsh, NP-P, PMHCNS-BC, RPT-S
Jean Klein, PhD, PMHCNS-BC
Julie Kuebler, APRN-BC
Jane Neese, PhD, APRN-BC
Sandra Nelson, PhD, RN, CS
Judith Nolen, RN, BC, MS
Ellen Rindner, PhD, ARNP-BC
Jana Saunders, PhD, RN, CS
Marilyn Shirk, MN, RN, CNS
Sandra Tate, APN, CS
Edilma Yearwood, PhD, PMHCNS-BC, FAAN
Jaclene Zauszniewski, PhD, RN-BC, FAAN

ISPN Divisions

ACAPN: Association of Child and Adolescent Psychiatric Nurses
AGPN: Adult and Geropsychiatric-Mental Health Nurses
ISPCLN: International Society of Psychiatric Consultation Liaison Nurses
SERPNI: Society of Education and Research in Psychiatric-Mental Health Nursing

Annual Conference Preliminary Program
The Art, Science, and Diversity of Psychiatric Nursing

Registration

There are three ways to register for the ISPN Psychopharmacology Institute and Annual Conference:

- **Fax:** Complete the registration form on pages 11-12 and fax it to the ISPN Office at +1-608-443-2474 or +1-608-443-2478 along with your credit card information.
- **Mail:** Mail the registration form along with a check made out to ISPN for the appropriate fee.
- **Online:** Online registration will be available in late January. Visit www.ispn-psych.org for more information.

The Annual Conference registration fee includes:

- Two and a half days of Conference activities
- The Conference CD, containing information on each presentation
- Networking opportunities with advanced-practice nurses in psychiatric and mental health
- Entrance to the exhibit hall of vendors servicing the needs of the psychiatric and mental health nursing community
- Admission to the Welcome Reception and Awards Brunch
- Continental breakfast and refreshment breaks each day of the Conference
- A Conference Directory, which includes a listing of all pre-registered attendees and invited speakers

Register prior to February 28 and save \$50!

Nursing Contact Hours

Contact hours have been applied for through the Wisconsin Nurses Continuing Education Approval Program Committee. Contact hours are complimentary with your registration fee. Please note on your registration form if you are interested in receiving contact hours for attending the Conference.

Hotel Accommodations

The Psychopharmacology Institute and Annual Conference will be headquartered at the Westin LaPaloma Resort in Tucson.

Sleeping Room amenities include the following:

- Westin’s Signature Heavenly Bed®
- Private balcony or patio
- Complimentary wireless Internet access
- Dual phone lines with speakerphone
- Unlimited local calls
- In-room safe
- Complimentary use of the WestinWorkout Powered by Reebok Fitness Center
- Business Center open 24 hours a day for self-service – staffed from 7:00 a.m.-5:00 p.m. each day
- Access to the Red Door Spa (extra charges apply)
- Complimentary self-parking, \$15 for valet parking
- Enterprise Car Rental services located in the lobby
- Complimentary shuttle service to La Encantada Shopping Center (www.laencantadashoppingcenter.com)
- Golf, tennis, and five pools
- Check-in is 4:00 p.m.; check-out is 12:00 noon

Hotel Restaurants

(www.westinlapalomaresort.com/dining.html)

- Azul Restaurant (www.azullapaoloma.com)
- Azul Lounge (www.janos.com)
- Janos Fine Dining (www.janos.com)
- Sabino’s Pool Bar and Grill
- J Bar
- Courtside Deli
- Espresso at LaPaloma (featuring Starbucks Coffee)
- Room Service (24 hours per day)

Secure your hotel reservations online by visiting the ISPN website at www.ispn-psych.org, click under Conferences, and look under Hotel Accommodations for the online link. Or contact the Westin LaPaloma Resort

directly at +1-520-742-6000 to make your housing reservations. The sleeping room rate is \$169 single or double. Please refer to the ISPN Conference in order to be eligible for the conference rate (does not include taxes of 13.05%). Please make your reservations prior to **March 1, 2011**, to ensure receipt of the discounted rate.

Please note there is a \$30 early departure fee if an attendee checks out prior to the confirmed checkout date. Please check your reservation confirmation before arriving at the hotel.

The Westin LaPaloma Resort

3800 East Sunrise Drive
 Tucson, AZ 85718
 Email: Info@WestinLaPalomaResort.com
 Phone: +1-520-742-6000

Air Travel

Plan your airline arrangements to Tucson early! To make a flight reservation or request a quote, contact Burkhalter Travel at +1-800-556-9286 (press 0 and ask for the Corporate Department) from 8:30 a.m.-5:00 p.m. (CST) Monday through Friday (+1-608-833-9339). Please reference the ISPN Annual Conference when making your reservations. Fare restrictions and cancellation penalties may apply to your travel. Be sure to have the agent advise you of any applicable restrictions. Burkhalter Travel will book your travel on the air carrier offering the greatest discount.





Annual Conference Preliminary Program
The Art, Science, and Diversity of Psychiatric Nursing

ISPN Foundation Event

Thursday, March 31, 2011
6:30 p.m.-8:00 p.m.

Join us in Tucson for a southwestern style Fiesta, cash bar, and Silent and Live Auctions, where you can network with new and old Amigos! A portion of the \$35 cost per person will be used to support the Foundation.

Funds raised at the Auctions will support ISPN activities such as:

- Scholarships to assist graduate students and international members to attend the conference
- Research grants to enhance psychiatric nursing science
- Endowment for the Foundation
- ISPN sponsored events

We need your donations to help make the Silent and Live Auctions successful! Donating items for the auctions are a great way to support your organization...and participation in the auctions are lots of fun! Items from members and companies are both welcome. The value of your donated item is tax deductible as allowed by law and your particular tax situation. You will receive a thank you letter from the Foundation stating the value of the donation and that no goods or services were exchanged for the donation.

Recognition

For your donation you will receive:

- A personal thank you letter;
- Acknowledgement on the Auction Bid Sheet; and
- Listing of your donation and name on the ISPN Foundation web page on the ISPN website.

To make a donation:

You may either send your item to: Pam Lusk, 918 W. Culver St., Phoenix, AZ 85007, prior to the Conference, or you may bring your item to the ISPN Conference and drop them off at the registration desk on Wednesday evening from 6:00 p.m. to 7:00 p.m., or Thursday morning, prior to the first session.

Please register for this event on the ISPN registration form enclosed with this brochure.

Muchas Gracias Amigos!

Be a Member...Bring a Member

Calling all ISPN members to bring a buddy to the Annual Conference! Spread the word on the educational opportunity being held this March in Tucson. And what do you get for participating? Your name will be entered into a drawing to win a gift card. Be sure to have your buddy include your name as the referring member on the registration form (applicable to first time attendees).

ISPN Award Nominations

Honor a colleague by nominating them for one of the ISPN awards. Nominations will be taken online starting in February (www.ispn-psych.org). Full award descriptions will be available there too.

Division Awards

ACAPN Division Award
AGPN Division Award
ISPCLN Leadership Award
SERPN Jeanette Chamberlain Award

ISPN Awards

Clinical Practice Award
Diversity Award
Education Award
Melva Jo Hendrix Lectureship Award
Research Award
Service to Psychiatric Nursing Award

Recipients are selected by considering the nominee's contributions and their impact on individuals, systems, or populations using the criteria of the particular award. To a lesser degree, consideration will be given to the general contributions the individual has made to the profession -- including ISPN or one of the constituent divisions. While many award recipients are seasoned achievers, early career members who are making solid contributions have received awards in recent years.

Plan to visit the website to nominate a deserving member.

Foundation Scholarships

There are two scholarships available this year from the ISPN Foundation:

Scholarship 1

The first scholarship is for the support of graduate nursing students in the amount of \$750.

Scholarship 2

This scholarship is for nurses living outside of the United States that wish to travel to the 2011 Annual Conference in Tucson. The amount of this scholarship is \$750.

To obtain application materials for either scholarship, please send an email to Kathy Scharer at kmschar@mailbox.sc.edu.

Applications must be submitted by February 28, 2011.

Tucson, Arizona

With the mild climate and about 350 sunny days a year, Tucson will be a pleasant destination in late March! The average high temperature in March is 75 degrees Fahrenheit and the low is 49 degrees Fahrenheit.

Be sure to visit the Tucson Convention and Visitors Bureau website at www.visittucson.org which contains information on attractions, maps, outdoor adventures, heritage and cultural events and much more! Take advantage of the complimentary myTucson Vacation Planner available on their website.

Request a free Visit Tucson: Official Destination Guide at:
<https://www.visittucson.org/send/>

2011 Psychopharmacology Institute • March 29-30, 2011

Introduction

The 2011 ISPN Psychopharmacology Institute is fast approaching, so get out those schedulers and don't miss this event being held March 29 & 30 in Tucson, Arizona! The content has been carefully chosen based on the feedback from ISPN members and from all the participants that attended the Third ISPN Psychopharmacology Institute. The Psychopharmacology Institute Planning Committee has worked diligently over the last year to respond to your ideas for topic areas and recommended speakers.

The content is diverse and addresses patients across the age spectrum and prescribing issues related to varying practice settings. During the Institute there are two specific sessions focused on seeking out consultation from a panel of experts; one session focuses on prescribing for child/adolescents and the other on adult/geriatric/consultation/liason populations. This is a time for you to be actively involved in the learning process by sharing one of your particularly challenging clinical cases for panel and audience discussion.

The Psychopharmacology Institute is designed to be interactive and assist you in developing partnerships that will last far beyond the two days of the Institute. You will have opportunities to network with advance practice colleagues, establish new relationships and interact with the presenters. We actively encourage our student participants to continue their course of education into real time practice and establish connections with experienced prescribing APRNs.

New this year will be the addition of round table discussions. Participants are encouraged to bring difficult scenarios, questions, and complex issues to discuss related to the following:

1. Child/adolescent issues/disorders;
2. Geropsychiatric issues; and
3. Adult co-morbidities.

We hope that you take every opportunity to make this educational event a positive learning experience. So mark those calendars and start preparing for the ISPN Psychopharmacology Institute in 2011!

Best regards,

Evelyn Parrish, PhD, APRN
Co-Chair, Psychopharmacology Institute

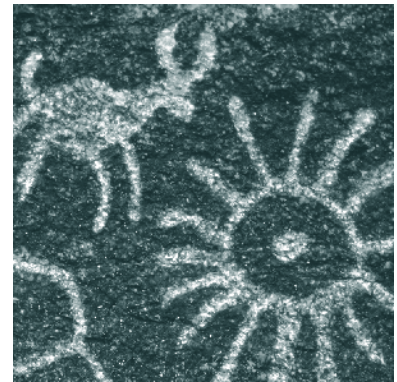
Karen Ragaisis, MSN, APRN, PHMNP-BC, PMHCNS-BC, CARN
Co-Chair, Psychopharmacology Institute

Psychopharmacology Institute Planning Committee Members

Evelyn Parrish, PhD, APRN, Co-Chair
Judith Coucouvanis, MA, APRN-BC, PMHCNS-BC
Peggy Dulaney, MSN, RN
Judith Hirsh, NP-P, PMHCNS-BC, RPT-S
Susan Krupnick, MSN, PMHCNS-BC, ANP, CARN
Karen Ragaisis, APRN, MSN, PMHCNS-BC, PMHNP-BC, CARN, Co-Chair
Diane Snow, PhD, RN, PMHNP-BC, CARN
Victoria Soltis-Jarrett, PhD, PMHCNS/NP-BC
Mary Weber PhD, APRN, PMHNP-BC

Psychopharmacology Institute Abstract Reviewers

Judith Hirsh, NP-P, PMHCNS-BC, RPT-S
Evelyn Parrish, PhD, APRN
Karen Ragaisis, APRN, MSN, PMHCNS-BC, PMHNP-BC, CARN
Diane Snow, PhD, RN, PMHNP-BC, CARN
Victoria Soltis-Jarrett, PhD, PMHCNS/NP-BC
Mary Weber PhD, APRN, PMHNP-BC



Objectives

This course has been designed so that the participants will be able to:

- Describe new and comprehensive knowledge regarding the psychopharmacologic treatment of major psychiatric, substance abuse disorders, along with other co-morbidities across the life span; which will include antidepressants, antipsychotics, mood stabilizers, psychostimulants and addiction pharmacology.
- Discuss the emerging knowledge of pharmacogenomics and pharmacoconomics and the importance of this information in the practice of prescribing psychopharmacologic agents.
- Explore new and comprehensive knowledge associated with the integration of psychopharmacology prescribing into clinical practice, across the life span, and in varying clinical practice settings.
- Identify current and future innovations and advancements in the area of psychopharmacology.



**Fourth Annual Psychopharmacology Institute and 13th Annual Conference
International Society of Psychiatric-Mental Health Nurses (ISPN)**

2011 Psychopharmacology Institute Program • March 29-30, 2011

Tuesday, March 29, 2011

11:30 a.m.-5:00 p.m.
Registration

1:00 p.m.-1:15 p.m.
Welcome and Announcements

1:15 p.m.-1:30 p.m.
Introduction to the McCabe Lectureship

1:30 p.m.-3:00 p.m.
Susan McCabe Lectureship
Focus on Autism: Blending
Psychopharmacology & Psychotherapy
*Judith Coucouvanis, MA, APRN-BC,
PMHCNS-BC, Nurse Practitioner and Clinical
Consultant, Department of Psychiatry,
University of Michigan, Ann Arbor, MI*

3:00 p.m.-3:15 p.m.
Refreshment Break

3:15 p.m.-4:30 p.m.
Concurrent Sessions

Concurrent Session 1
APRN Use of the Buckingham Model for
Diagnosis and Treatment of Complex Cases
of ADHD in Youths and Adults
*Ellen Rindner, PhD, PMH/NP-CNS, and
Diane Buckingham, MD*

Concurrent Session 2
Differences in SSRI: Implications for
Prescribing Decisions
Janiece E. DeSocio, PhD, RN, PMHNP-BC

Concurrent Session 3
Psychotropic Medication Management
for the Pregnant Woman Part II: Proposed
Guidelines for the Practitioner
*Priscilla Lynch, MS, RN, and Elizabeth Krch-
Cole, MS, RN*

4:45 p.m.-6:00 p.m.
Concurrent Sessions

Concurrent Session 4
Overview of Medication Algorithms
Commonly Used to Treat Childhood Mental
Illness
Sandra Tate, APN, CS

Concurrent Session 5
The Psychopharmacology of Fibromyalgia:
A Review and Discussion of the Literature
Victoria Soltis-Jarrett, PhD, PMCNS/NP-BC

Concurrent Session 6
Pharmacological Management of Young
Adults with Bipolar Disorder to Achieve
Level Mood
Diane Snow, PhD, RN, PMHNP-BC, CARN

6:00 p.m.
Free Evening to Enjoy Tucson

Wednesday, March 30, 2011

8:00 a.m.-7:00 p.m.
Registration

8:00 a.m.-8:30 a.m.
Continental Breakfast

8:30 a.m.-8:45 a.m.
Welcome and Announcements

8:45 a.m.-10:00 a.m.
Plenary Session
**Ceremony Medicine: Traditional Dine
Healing Practices for Veterans with PTSD**
*Albert Laughter, MSW, and Dine Medicine
Man (Navajo), Shonto, AZ*

10:00 a.m.-10:15 a.m.
Refreshment Break

10:15 a.m.-11:30 a.m.
Concurrent Sessions

Concurrent Session 7
It May Be a Zebra: Psychopharmacologic
Assessment and Treatment of Patients with
Rare or Unusual Disorders on a Psychiatric
Consultation Service
*Susan Krupnick, MSN, PMHCNS-BC, ANP,
CARN*

Concurrent Session 8
Safety and Efficacy of Inhaled Loxapine (AZ-
004) for the Rapid Treatment of Moderate
Agitation in Patients with Schizophrenia or
Bipolar Disorder
*Gus Alva, MD, Jason T. Olin, PhD+, and
Tarry A. Wolfe, RN, MSN, FNP-C+*

Concurrent Session 9
Medicating Mood Disorders in Childhood:
Three Cases and Three Strategies
*Beth Muller, APRN, and Anastasia
Okoniewski, APRN*

11:45 a.m.-1:00 p.m.
Lunch (on your own)
**Boxed lunches will be available for sale –
please purchase one by checking the box
on the registration form.**

**Lunch with the Experts Roundtable
Discussions**
Child/Adolescent Issues/Disorders
Geropsychiatric Issues
Adult Co-Morbidities

1:15 p.m.-2:30 p.m.
Concurrent Sessions

Concurrent Session 10
Atypical Antipsychotic Use in Children From
A-Z: Aripiprazole to Ziprasidone
Jane Marie Sulzle, RN, DNP(c), CNS

Concurrent Session 11
Ethical Issues in Using Psychiatric
Medication with Children and Adolescents
*Geraldine S. Pearson, PhD, PMH-CNS, BSN,
FAAN*

Concurrent Session 12
Modafinil's Use in the Treatment of Pain
Associated with CP in a Mentally Ill Client: A
Case Study
Sandra Tate, APN, CS, and Mary DeClue, MSN

2:30 p.m.-2:45 p.m.
Refreshment Break

2:45 p.m.-4:45 p.m.
Prescribing Panel 1
Child/Adolescent Issues and Disorders
*Judith Coucouvanis, MA, APRN-BC,
PMHCNS-BC, and Geraldine S. Pearson,
PhD, PMH-CNS, BSN, FAAN*

2:45 p.m.-4:45 p.m.
Prescribing Panel 2
Gero/Psychiatric Issues
*Judith Hirsh, NP-P, PMHCNS-BC, RPT-5,
Karen Ragaisis, APRN, MSN, PMHCNS-BC,
PMHNP-BC, CARN, and Victoria Soltis-
Jarrett, PhD, PMHCNS/NP-BC*

2:45 p.m.-4:45 p.m.
Prescribing Panel 3
Adult Co-Morbidities
*Diane Snow, PhD, RN, PMHNP-BC, CARN,
Susan Krupnick, MSN, PMHCNS-BC, ANP,
CARN, and Mary Weber, PhD, APRN, PMHNP-
BC*

5:00 p.m.-6:15 p.m.
Closing Plenary Session
Microbes and Mental Illness
*Virginia Savely, DNP, MEd, APRN, FNP-C, CAN
Owner, TBD Medical Associates, San
Francisco, CA and Texas Lyme Consulting,
Austin, TX*

2011 Annual Conference Program • March 30-April 2, 2011

Wednesday, March 30, 2011

6:15 p.m.-6:30 p.m.
Complete Evaluations and Closing Remarks

6:30 p.m.-8:00 p.m.
Annual Conference Opening Reception
All Psychopharmacology Institute registrants are invited to attend!

6:30 p.m.-8:00 p.m.
Opening Reception and Poster Session
 + Co-author, but not presenting.

Thursday, March 31, 2011

7:30 a.m. - 5:00 p.m.
Registration

8:00 a.m.-9:00 a.m.
Continental Breakfast in the Exhibit Area

8:00 a.m.- 8:30 a.m.
ISPN New Member Orientation

8:30 a.m.-9:45 a.m.
Welcome and Opening Keynote Address

*Elena Avila, MSN, RN
 Curandera and Psychiatric Clinical Nurse Specialist,
 Private Psychotherapy Practice, Lecturer in Psychiatric Nursing,
 University of New Mexico, Albuquerque, NM*



9:45 a.m.-10:00 a.m.
Refreshment Break Exhibits and Poster Session

10:00 a.m.-11:30 a.m.
Workshop #1
 Interactive Panel: Report of the ISPN/APNA Task Force on Licensure, Accreditation, Credentialing, and Education (LACE)

Mary Jo Regan-Kubinski, PhD, RN, Patricia Cunningham, DNSc, APRN, BC, and Barbara Drew, PhD, RN

11:30 a.m.-11:50 a.m.
Exhibits and Poster Session

11:50 a.m.-1:00 p.m.
Lunch Break (on your own)

1:00 p.m.-1:50 p.m.
Concurrent Sessions (1.1-1.5)

Concurrent Session 1.1 (Adult)
 Therapeutic Alliance and Psychotherapy: Should We Be Measuring Alliance and Outcomes in Our Psychotherapy Practice?
Cynthia T. Handrup, DNP, APRN, PMHCNS-BC

Concurrent Session 1.2 (Adult)
 The Experience of Zen Meditation on Patients with Generalized Anxiety Disorder in Taiwan: The Focus Group Findings
ChuehFen Lu, PhD (Taiwan) and Lorraine Smith, PhD+

Concurrent Session 1.3
 (Consultation/Liaison)
 Neuroleptic Malignant Syndrome
Leanna Pfeiffer, RN, BSc, BScN, MN-C, CPMHN(C) (Canada), and Maureen Garner, RN, BA, BScN, MHS-C, CPMHN(C)

Concurrent Session 1.4
 (Education/Research)
 Simulation: Exploring Therapeutic Use of Self
Carol T. Moriarty, DPM, MSN, APRN-BC, PMHRN-BC

Concurrent Session 1.5
 (Child/Adolescent)
 Trauma-Focused Cognitive Behavior Therapy with Children
Vickie L. Beck, CNS, BC

2:00 p.m.-3:00 p.m.
ISPN Business Meeting

3:00 p.m.-3:20 p.m.
Refreshment Break Exhibits and Poster Session

3:20 p.m.-4:10 p.m.
Concurrent Session (2.1-2.5)
Concurrent Session 2.1 (Geriatric)
 Dementia: Focus on Types and Treatment
Mary C. DeClue, APN, FNP

Concurrent Session 2.2 (Child/Adolescent)
 The Telehelper Grant: Training Up Nurses via Telepsychiatry to Detect Youth Depression
Ellen C. Rindner, PhD, PMH/NP-CNS, and EveLynn Nelson, PhD+

Concurrent Session 2.3
 (Education/Research)
 The New Reflective Practice Literature: What it Speaks to Psychiatric Mental Health Nurses: A Review of the Literature and Implications
Kathleen T. McCoy, DNSc, APRN, PMHCNS-BC, FNP-BC

Concurrent Session 2.4 (Adult)
 Understanding and Treating Traumatic Brain Injury Across the Lifespan: Neurobiology and Therapeutic Regimens
Beverly Hart, PhD, PMHNP

Concurrent Session 2.5
 (Education/Research)
 Co-Morbidities of Psychiatric/Mental Health and Primary Care Illness: Integration of Care for Improved Detection, Treatment, and Outcomes
Katherine A. Darling, DNP, APRN-C

4:20 p.m.-5:10 p.m.
Concurrent Sessions (3.2-3.5)
Concurrent Session 3.2 (Education)
 Teaching Genomics to Psychiatric Mental Health Nurse Practitioner Students: Basic Competencies
Diane M. Snow, PhD, RN, PMHNP-BC, CARN

Concurrent Session 3.3 (Adult)
 Do You Help Mother's too: An Alternative View of Munchausen's Syndrome by Proxy (MSBP)
Victoria M. Soltis-Jarrett, PhD, PMHCNS/NP-BC

Concurrent Session 3.4 (Adult)
 A Different View on Dissociative Identity Disorder: Is Reintegration the Only Way: A Case Study
Nancy C. Davenport, RN, MSN, PMHCNS-BC, LPA

Concurrent Session 3.5
 (Education/Research)
 Shifting Sands: Use of Engaged Pedagogy to Promote Nursing Student Well-Being
Edilma L. Yearwood, PhD, RN, PMHCNS-BC, FAAN, and Joan B. Riley, MS, MSN, FNP-BC

5:20 p.m.-6:20 p.m.
Division Meetings
 ISPCLN
 SERPN

6:30 p.m.-8:00 p.m.
ISPN Foundation Reception
(Available at an additional fee)
 + Co-author, but not presenting.

2011 Annual Conference Program • March 30-April 2, 2011

Friday, April 1, 2011

8:00 a.m.-5:00 p.m.
Registration

8:00 a.m.-9:30 a.m.
**Melva Jo Hendrix Lectureship and Awards
Ceremony: Transformation in Psychiatric
Mental Health Nursing**

*C. Elizabeth Bonham,
PhD, RN, PMHCNS-BC
Assistant Professor,
College of Nursing and
Health Professions,
University of Southern
Indiana, Evansville, IN*



9:30 a.m.-11:00 a.m.
Workshop #2
Writing for Publication: Submitting a Paper

*Geraldine S. Pearson, PhD, PMH-CNS,
FAAN, Linda Finke, PhD, RN, and Joyce J.
Fitzpatrick, PhD, RN, FAAN*

9:30 a.m.-10:20 a.m.
Concurrent Sessions (4.1-4.4)

Concurrent Session 4.1 (General)
**On the Path to Becoming a PMHNP/Energy
Healer-Pt II: Practicing Energy Healing on
Treatment Refractory Emotionally Disturbed
Youth and Adults**

Ellen C. Rindner, PhD, PMH/NP-CNS

Concurrent Session 4.2 (Research)
**High Risk Patients: Changing Profiles and
Implications for Practice**

*Linda Chafetz, RN, DNSc, and
Gerri Collins-Bride, RN, MS, ANP*

Concurrent Session 4.3
(Education/Research)
**Effect of a Motivational Intervention
on Exercise Behavior in Persons with
Schizophrenia Spectrum Disorders (SSDs)**

*Lora H. Beebe, PhD, PMHNP-BC, Reveal Burk,
MSN+, Olivera Dessieux, MSN+, Kathy
Smith, RN, PhD+, Abbas Tavakoli, DrPH+,
Clifton Tennison, MD+, and Dawn Velligan,
PhD+*

Concurrent Session 4.4
(Child/Adolescent)
**Recognizing Early Indications of Risk
for Anorexia Nervosa in Children and
Adolescents**

Janiece E. DeSocio, PhD, RN, PMHNP-BC

10:20 a.m.-10:40 a.m.
Refreshment Break
Exhibits and Poster Session

10:40 a.m.-11:30 a.m.
Concurrent Sessions (5.1-5.4)

Concurrent Session 5.1 (General)
**Healing Touch: Complementary Therapy for
Mental Health**

Linda Jo Volness, MS, PMHCA, HTP

Concurrent Session 5.2
(Education/Research)
**Resilience in Family Members of Persons
with Serious Mental Illness**

*Jaclene A. Zauszniewski, PhD, RN-BC, FAAN,
Abir K. Bekhet, PhD, RN, HSMI+, and Jane
M. Suresky, DNP, PMHCNS-BC+*

Concurrent Session 5.3
(Education/Research)
**Emotional Intelligence: Impact on Student
Performance in Psychiatric/Mental Health
Settings**

*Lucille C. Gambardella, PhD, PMHCNS-BC,
CNE, ANEF*

Concurrent Session 5.4 (Adult)
**Prevention to End the Violence Against
Women**

*Alia Nasir, MA, EHPID (Pakistan), and Ashraf
Valliani Farooqui, BSc+*

11:30 a.m.-1:00 p.m.

Lunch Break

Focused Roundtable Discussions
**Boxed lunches will be available for sale –
please purchase one by checking the box
on the registration form.**

Focused Roundtable #1
**Bringing Psychiatric Mental Health Nurses'
Together to Identify Global Psychiatric
Issues within and Beyond our Membership**

*Sara Horton-Deutsch, PhD, CNS, and
Vicki Hines-Martin, PhD, RN, FAAN*

Focused Roundtable #2
Health Care Reform

Kathleen Delaney, PhD, PMH-NP

Focused Roundtable #3
Suicide in the Military

Rosanne Visco, PhD, MSN, RN-BC

1:00 p.m.-2:00 p.m.
Plenary Session
**Improving the Quality, Safety and Cost-
Effectiveness of Mental Health Care with
Evidence-Based Practice**

*Bernadette Mazurek
Melnyk, PhD, RN, CPNP/
PMHNP, FNAP, FAAN
Dean and Distinguished
Foundation Professor
in Nursing, Arizona
State University College
of Nursing & Health
Innovation, Phoenix, AZ and member, U.S.
Preventive Services Task Force*



2:10 p.m.-3:00 p.m.
Concurrent Sessions (6.1-6.5)

Concurrent Session 6.1
(Education/Research)
**Resourcefulness Training: Group Versus
Individualized Approaches**

*Abir Bekhet, PhD, RN, HSMI, and Jaclene A.
Zauszniewski, PhD, RN-BC, FAAN*

Concurrent Session 6.2 (Adult)
**PTSD Basics and Nuances for Advanced
Practice: Causes, Diagnosis, Neurobiology,
and Treatment**

Debby A. Phillips, PhD, APRN-PMH

Concurrent Session 6.3 (Geriatric)
**MEDGO: A Medication Teaching Program to
Prevent Depression in Seniors**

Anne DuVal Frost, PhD, BSN, MA, RN

Concurrent Session 6.4 (Adult)
**The Experience of Treatment for Nurses
with Substance Use Disorders**

*Angela McNelis, PhD, CNS, Sara Horton-
Deutsch, PhD, CNS, and Pamela O'Haver
Day, PMHCNS-BC*

Concurrent Session 6.5 (Child/Adolescent)
**Proposed Changes for Childhood Bipolar in
DSM-5**

Linda Jo Volness, MS, PMHCA, HTP

3:00 p.m.-3:15 p.m.
Refreshment Break
Exhibits and Poster Session

3:15 p.m.-4:05 p.m.
Concurrent Sessions (7.1-7.5)

2011 Annual Conference Program • March 30-April 2, 2011

Friday, April 1, 2011

Concurrent Session 7.1
(Child/Adolescent)

Patient Centered, Trauma Focused, Collaborative Problem Solving: A Model of Nursing Conceptualization and Care for Children

Tess R. Searls, APRN

Concurrent Session 7.2 (Geriatric)

Gero-Psych Teaching and Learning Strategies: Cognitive Assessment During a Seasonal Flu Clinic

Cheryl R. Zauderer, PhD, NPP, and Christine Anne Ganzer, PhD, NPP

Concurrent Session 7.3
(Education/Research)

Nursing Education in Cyberspace: Teaching Graduate Psychopharmacology Online

Sandra J. Wood, MSN, APRN-BC, Joyce Briggs, RN, MSN+, and Rhonda J. Palmer, RN, MSN

Concurrent Session 7.4
(Child/Adolescent)

Effective Internet-Based Cognitive Behavioral Therapy on Decreasing Depressive Symptoms and Increasing Self-Esteem in Overweight Adolescents

Beverly Thomas-Carter, FNP-BC, PMHNP-DNP candidate

Concurrent Session 7.5 (Adult)

Using the Myers-Briggs Inventory to Increase Effectiveness of Couples Assessment and Counseling

Vicki D. Lachman, PhD, APRN-BC, MBE

4:15 p.m.-5:05 p.m.

Concurrent Sessions (8.1-8.5)

Concurrent Session 8.1 (General)

Intervention Development: Assessing Critical Parameters from the Intervention Recipient's Perspective

Jaclene A. Zauszniewski, PhD, RN-BC, FAAN

Concurrent Session 8.2
(Education/Research)

Migrant Mental Health History: Lessons from the Field

Sergio Olivares, PhD

Concurrent Session 8.3 (Adult)

Depressive Symptoms, Sleep Disturbance and Chronic Illness in Midlife Women: A Longitudinal Study

Pamela A. Minarik, PhD, RN, PMHCNS-BC, FAAN

Concurrent Session 8.5

(Consultation/Liaison)
The Butterfly Factor: Metamorphosis of an Inpatient Psychiatric Unit through Education, Collaboration, and EBP

Karen M. Pehrson, MS, PMHCNS, BC and Deborah Hayes, RN, BC, BSN, MS

5:10 p.m.-6:10 p.m.

Division Meetings

ACAPN

AGPN

+Co-author, but not presenting.

Saturday, April 2, 2011

8:00 a.m.-1:00 p.m.
Registration

8:30 a.m.-9:30 a.m.

Plenary Session
Diversity vs. Inclusion in Academia and in Practice: Why Should Psych Nurses Care?



*Laura C. Hein, PhD, RN, NP-C
Assistant Professor of
Nursing, University of South
Carolina, Columbia, SC*

9:30 a.m.-10:00 a.m.

Refreshment Break

10:00 a.m.-10:50 a.m.

Concurrent Sessions (9.1-9.4)

Concurrent Session 9.1 (Adult)

Integrated Care for Post-Traumatic Stress Disorder

Marsha D. Snyder, PhD, PMHCNS-BC

Concurrent Session 9.3

(Education/Research)

Sibling Violence: State of the Science-Establishing Practice Guidelines

Debby A. Phillips, PhD, APRN-PMH

Concurrent Session 9.4 (Adult)

Implementation of Modified Health Education Strategies for Increasing Diabetes Knowledge in the Severe and Persistently Mentally Ill (SPMI)

Miriam S. Zwitter, PhD, RN, and Barbara Ponder, MS, RN+

11:00 a.m.-11:50 a.m.

Concurrent Sessions (10.1-10.3)

Concurrent Session 10.1

(Education/Research)

New Approach to Substance Abuse Education in Undergraduate Nursing

Barbara Jean Sullivan, PhD, APRN-BC, NP, and Kendra J. Niemi, BA, BSN, RN

Concurrent Session 10.2

(Education/Research)

Planning Community-Based Participatory Research: Collaboration at the Most Basic Level

Pamela Galehouse, PhD, PMHCNS-BC

Concurrent Session 10.3 (Adult)

The Role of the Psychiatric Consultation Liaison Nurse in Developing a Comprehensive Weight Management Program

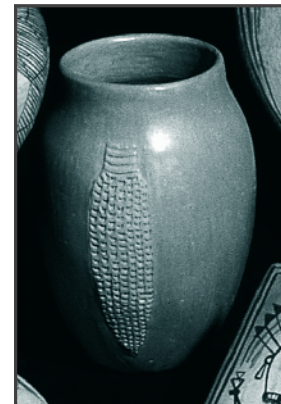
Susan Krupnick, MSN, PMHCNS-BC, ANP, CARN

12:00 noon

Conference Ends

12:00 noon - 1:00 p.m.

Diversity and Equity Committee Meeting





2011 Annual Conference Program • March 30-April 2, 2011

Saturday, April 2, 2011

Poster Session

The posters will be available for viewing on:

- Wednesday, March 30 6:30 p.m.-8:00 p.m.
- Thursday, March 31 7:00 a.m.-4:00 p.m.
- Friday, April 1 9:30 a.m.-3:30 p.m.

Poster #1

Mental Health Perceptions and Barriers to Care: A Survey Study of Deployed Soldiers in Iraq

Rosanne Visco, PhD, MSN, RN-BC

Poster #2

Rooted and Grounded: Horticulture and Worship Compliment Care in an Adolescent Residential Psychiatric Setting

Kristin M. Moore, MDiv, and Tyra Warner, CTRS

Poster #3

Development of a Depression-Relapse Prevention Program Using a Dialectical Approach

Yasuko Koyano, PhD (Japan)

Poster #4

Civic Engagement and the University Student: The Lived Experience of Rediscovering Communities

Susan del Bene, RN, PhD, CNS

Poster #5

Alcohol Screening, Brief Intervention, Treatment and Referral: An Interdisciplinary Effort to Combine the Art and Science of Psychiatric Nursing to Improve Patient Safety, Outcomes, and Access to Care in the Community for Patients at Risk for Alcohol Related Issues

Lynnda L. Zibell Milsap, BSN, MS, CNS-BC

Poster #6

Recovery-Inspired Assault Prevention: Decreasing Violence through Culture Change

Sabrina Cito, RN, MSN, and Erin Schmidt, RN, BSN+

Poster #7

Psychometric Properties of the Arabic Version of the Depressive Cognition Scale

Abir Bekhet, PhD, RN, HSMI, and Jaclene A. Zauszniewski, PhD, RN-BC, FAAN+

Poster #8

Improving Therapeutic Communication Through Pre-Clinical Simulation

Janine Graf-Kirk, MA, RN, BC, CNE, and Teresita Proctor, MS, RN, ACNS-BC, CNE

Poster #9

Vitamin D and Psychiatric Disorders

Margaret Rafferty, DNP, RN, MPH, and Dorothy Grasso, MS, FNP, CCRN

Poster #10

Effective Reduction of Restraint and Seclusion in the Psychiatric Emergency Department While Maintaining a Safe Milieu

Lisa Gilley, RN, BSN, and Katherine Holland Pontone, RN, BSN, MSN

Poster #11

The Relationship Between Contextual Factors and Mental Health Help-Seeking Practices of African-American Adolescents and Their Parents

Halima Al-Khattab, RN, BSN, Marion E. Broome, PhD, RN, FAAN+, and Michael T. Weaver, RN, PhD, FAAN+

Poster #12

Diabetes Knowledge and Caregiving Experiences Among Family Members of People with Schizophrenia and Diabetes Mellitus

Peggy El-Mallakh, PhD, RN, Jean Edwards, BSN+, Brittany Evans, BA, BSN+, and John Myers, PhD+

Poster #13

Psychiatric-Mental Health Nurse Practitioners and School-Based Health Centers: A Match Made in Heaven

Dawn Boyd, MSN/PMHNP

Poster #14

Strengthening the Care Giver: Mentoring Program for Parents and Caregivers of Child and Adolescents in Inpatient and Residential Settings

Yvetta M. Collins

Poster #15

Post-Discharge Needs of African-American Patients with Mental Illness

Linda Gerson, PhD, RN, and Linda E. Rose, PhD, RN

Poster #16

Evaluation of the Revised European Quality of Life Scale (EQ-5D)

Susan McCrone, PhD, PMHCNS-BC, and Yea-Jyh Chen, PhD+

Poster #17

Spirituality in Nursing Practice with Those Who Experience Serious and Persistent Mental Illness

Linda O'Dell, BSN, MSN, DNP(c) and Carol Sharpe, BSN+

Poster #18

Use of Complementary and Alternative Medicine in Mental Illness

Salima Khawaja (Pakistan)

Poster #20

Suicide Prevention Post-Inpatient Discharge

Grace Serafini, RN, MSN, APRN-BC

Poster #21

Introducing Preceptor Training in an RN-BS Program

Candy Dato, PhD, RN, CNE, Patricia Maher-Brisen, MS, RN+, and Margaret Rafferty, DNP, RN, MPH, PMHCNS-BC

Poster #22

Legal and Ethical Implications for ER Nurses: Voluntary vs. Involuntary Status in Mental Health Patients

Elizabeth Hiebert, RN (Canada), and Shannon Raitt, RN

Poster #23

The Benefit of Therapy Dogs with Community Mental Health Clients

Elizabeth Ann Martin, MA, ARNP-BC

Poster #24

Psychotropic Medication Management for the Pregnant Woman

Elizabeth Krch-Cole, MS, RN, and Priscilla Lynch, MS, RN

Poster #25*

Mothering and Illicit Substance Use: A Critical Analysis of the Implications for Nursing and Health Policy

Michelle Foulkes, RN, MSc, PhD(c)

Poster #26*

Integrating Physical and Mental Health Across the Lifespan in a Nurse Managed Health Center: A Practical Approach and Lessons Learned

Keira Stevens, FNP-BC

Poster #27*

Narratives of Childhood by Male and Female Perpetrators of Child Sexual Abuse

Kelly Carlson, MSN, RN, Stephanie Powers, BS, MSN, Sandra P. Thomas, PhD, RN, FAAN, and Kenneth Phillips, PhD, RN

Poster #28*

The Effects of an Anger Management Program Using a Cognitive Behavior Framework in a Veteran Population

Carolyn Burcham, MSN, RN, ARNP, FNP-BC, PMHNP-BC

Poster #29*

Mexican Traditional Medicine: A Review of Mental Health Herbs

Tanya R. Sorrell, NP-C, MSN, MS, RN

*Graduate Nursing Student
+Co-author, but not presenting

REGISTRATION FORM



Fourth Annual Psychopharmacology Institute and 13th Annual Conference International Society of Psychiatric-Mental Health Nurses (ISPN)

March 29-April 2 • Westin LaPaloma Resort, Tucson, Arizona USA

Please complete all items on this registration form – type or print legibly. The deadline for pre-registration is **March 15, 2011**. After that date, plan to register at the conference site. Keep one copy of this completed form for your records. Save money by registering prior to **February 28, 2011!** All fees are quoted in U.S. funds.

Choose to register one of three ways:

- 1) Register online at www.ispn-psych.org (click under Conferences). Online registration will be available in January.
- 2) Fax your completed registration form with credit card information to +1-608-443-2478 or +1-608-443-2474. ISPN accepts MasterCard, Visa and American Express. Faxed registration forms without a form of payment will not be processed. If you are faxing your form, do not mail the original registration form.
- 3) Mail your completed registration form and payment (in U.S. funds only, drawn on a U.S. Bank) to the ISPN Office (see the address on the bottom of the second page of this form).

Additional Instructions

- a) Please complete one form per registrant.
- b) Registration by telephone will not be accepted.
- c) Payment must accompany each registration form. International registrants must submit payment in U.S. dollars, drawn on a U.S. bank.
- d) The deadline for inclusion in the Attendee Directory (distributed on-site) is February 28, 2011.

Registration Confirmation

If you do not receive a confirmation by e-mail within three weeks of registering, please contact the ISPN Office at info@ispn-psych.org or +1-608-443-2463 to verify that your registration form has been received.

Cancellation Policy

Any registration cancellation must be made in writing directly to the ISPN. If received before March 15, 2011, ISPN will apply a \$50 administrative fee and refund the remainder after the meeting. After March 15, 2011, no refund will be given. Walk-ins and replacements are always welcome.

Registration Information (please type or print clearly)

First Name _____

Last Name _____

Credentials _____

Job Title _____

Mailing Address _____

City _____

State/Province _____

Zip/Postal Code/Country _____

This address is: Home Company/Affiliation

Daytime Telephone Number _____

E-mail Address _____

(Please provide an e-mail address in order to receive confirmation of registration. Please print clearly!)

Badge Information

This is how your badge will read. Please type or print clearly (complete only those lines that are different from the "Registration Information" section).

First Name or Nickname: _____

Full Name: _____

Place of Employment: _____

City: _____

State/Province: _____

Country: _____

Be a Member... Bring a Member

Were you referred by an ISPN member? Yes No

If so, please include their name here: _____

General Information

Check here if you do NOT wish to be listed in the conference attendee directory.

Please provide a contact name and phone number (of the nearest relative or friend) in case of emergency:

Name: _____

Daytime Telephone Number: _____

Please check here if you need special assistance (an ISPN staff member will contact you for more details).

Membership

I am a member of (check one):

I am a current member of ISPN for 2010/2011.

I am registering as a non-member.

I would like to become a member of ISPN* while registering for the Conference (if so, please include a completed membership application).
* Includes two free months of membership: July 1-June 30 membership year.

Membership Renewal 2011 (July 1, 2010, to June 30, 2011)

Regular \$125 Student \$60 Retired \$60

Division – select all that apply (if you are an ISPN member):

ACAPN (Association of Child and Adolescent Psychiatric Nurses)

AGPN (Adult and Geropsychiatric-Mental Health Nurses)

ISPCLN (International Society of Psychiatric-Consultation Liaison Nurses)

SERPN (Society of Education and Research in Psychiatric-Mental Health Nursing)

Registration Fees

Please check the applicable boxes – all registration fees are quoted in U.S. dollars.

ISPN Psychopharmacology Institute

Tuesday, March 29 and Wednesday, March 30, 2011

Member \$275 USD

Non-Member \$325 USD

Student+ \$125 USD

+ Include a copy of your student ID as proof of your student status.

ISPN Annual Conference

Wednesday, March 30-Saturday, April 2, 2011

On or Prior to February 28 After February 28

Member \$445 USD \$495 USD

Non-Member \$595 USD \$645 USD

Joining ISPN with the Conference \$570 USD \$620 USD

Student + \$175 USD \$225 USD

+ Include a copy of your student ID as proof of your student status.

One-Day Registration: Member \$275 USD \$325 USD

One-Day Registration: Non-Member \$325 USD \$375 USD

Please check the date of attendance:

Thursday Friday Saturday

Registration Discounts

Please check the box or boxes that may be applicable to your registration fee:

If you attend both the Psychopharmacology Institute and the Annual Conference, you will receive a \$50 discount off your registration fee.

Psychopharmacology Institute Lead Presenter - Concurrent Session (\$50 credit)
Concurrent Session Number: _____

Annual Conference Lead Presenter - Concurrent Session (\$50 credit)
Concurrent Session Number: _____
(must register for the entire Annual Conference to receive the discount)

Annual Conference Lead Poster Presenter (\$25 credit)
Poster Number: _____
(must register for the entire Annual Conference to receive the discount)

ISPN Foundation Event

Reception and Silent Auction at the Westin LaPaloma Resort: \$35 per person
Thursday, March 31, 2011 – 6:30 p.m.-8:00 p.m.

Number of participants _____ X \$35 each = Total _____

Nursing Contact Hours

Yes, I would like to receive nursing contact hours

State Licensed In: _____

License Number (required): _____

No, I do not wish to receive nursing contact hours.

Boxed Lunches

Boxed lunches will be available based on pre-orders (not available on-site) for Wednesday, March 30 (Psychopharmacology Institute) and Thursday, March 31 (Annual Conference). If you are going to participate in the Roundtable Discussions plan on ordering a boxed lunch.

Wednesday, March 30 (Psychopharmacology Institute)

_____ Number of Lunches X \$43 = _____ total

Thursday, March 31 (Annual Conference)

_____ Number of Lunches X \$43 = _____ total

Session Interest

Please check the sessions below that you are planning to attend at the conference (one session per block of time).

<p><i>Thursday, March 31, 2011 1:00 p.m.-1:50 p.m.</i></p> <p><input type="checkbox"/> Concurrent Session 1.1 Therapeutic Alliance and Psychotherapy: Should We Be Measuring Alliance and Outcomes in Our Psychotherapy Practice?</p> <p><input type="checkbox"/> Concurrent Session 1.2 The Experience of Zen Meditation on Patients with Generalized Anxiety Disorder in Taiwan: The Focus Group Findings</p> <p><input type="checkbox"/> Concurrent Session 1.3 Neuroleptic Malignant Syndrome</p> <p><input type="checkbox"/> Concurrent Session 1.4 Simulation: Exploring Therapeutic Use of Self</p> <p><input type="checkbox"/> Concurrent Session 1.5 Trauma-Focused Cognitive Behavior Therapy with Children</p>	<p><input type="checkbox"/> Concurrent Session 3.3 Do You Help Mother's too: An Alternative View of Munchausen's Syndrome by Proxy (MSBP)</p> <p><input type="checkbox"/> Concurrent Session 3.4 A Different View on Dissociative Identity Disorder: Is Reintegration the Only Way: A Case Study</p> <p><input type="checkbox"/> Concurrent Session 3.5 Shifting Sands: Use of Engaged Pedagogy to Promote Nursing Student Well-Being</p>	<p><input type="checkbox"/> Concurrent Session 5.4 Prevention to End the Violence Against Women</p> <p><i>Friday, April 1, 2011 2:10 p.m.-3:00 p.m.</i></p>	<p><i>Friday, April 1, 2011 4:15 p.m.-5:05 p.m.</i></p> <p><input type="checkbox"/> Concurrent Session 8.1 Intervention Development: Assessing Critical Parameters from the Intervention Recipient's Perspective</p> <p><input type="checkbox"/> Concurrent Session 8.2 Migrant Mental Health History: Lessons from the Field</p> <p><input type="checkbox"/> Concurrent Session 8.3 Depressive Symptoms, Sleep Disturbance and Chronic Illness in Midlife Women: A Longitudinal Study</p> <p><input type="checkbox"/> Concurrent Session 8.5 The Butterfly Factor: Metamorphosis of an Inpatient Psychiatric Unit through Education, Collaboration, and EBP</p>
<p><i>Thursday, March 31, 2011 3:20 p.m.-4:10 p.m.</i></p> <p><input type="checkbox"/> Concurrent Session 2.1 Dementia: Focus on Types and Treatment</p> <p><input type="checkbox"/> Concurrent Session 2.2 The Telehelper Grant: Training Up Nurses via Telepsychiatry to Detect Youth Depression</p> <p><input type="checkbox"/> Concurrent Session 2.3 The New Reflective Practice Literature: What it Speaks to Psychiatric Mental Health Nurses: A Review of the Literature & Implications</p> <p><input type="checkbox"/> Concurrent Session 2.4 Understanding and Treating Traumatic Brain Injury Across the Lifespan: Neurobiology and Therapeutic Regimens</p> <p><input type="checkbox"/> Concurrent Session 2.5 Co-Morbidities of Psychiatric/Mental Health and Primary Care Illness: Integration of Care for Improved Detection, Treatment, and Outcomes</p>	<p><i>Friday, April 1, 2011 9:30 a.m.-11:00 a.m.</i></p> <p><input type="checkbox"/> Workshop #2 Writing Papers for Publication</p>	<p><input type="checkbox"/> Concurrent Session 6.1 Resourcefulness Training: Group Versus Individualized Approach</p> <p><input type="checkbox"/> Concurrent Session 6.2 PTSD Basics and Nuances for Advanced Practice: Causes, Diagnosis, Neurobiology, and Treatment</p> <p><input type="checkbox"/> Concurrent Session 6.3 MEDGO: A Medication Teaching Program to Prevent Depression in Seniors</p> <p><input type="checkbox"/> Concurrent Session 6.4 The Experience of Treatment for Nurses with Substance Use Disorders</p> <p><input type="checkbox"/> Concurrent Session 6.5 Proposed Changes for Childhood Bipolar in DSM-5</p>	<p><i>Saturday, April 2, 2011 10:00 a.m.-10:50 a.m.</i></p>
<p><i>Thursday, March 31, 2011 4:20 p.m.-5:10 p.m.</i></p> <p><input type="checkbox"/> Concurrent Session 3.2 Teaching Genomics to Psychiatric Mental Health Nurse Practitioner Students: Basic Competencies</p>	<p><i>Friday, April 1, 2011 9:30 a.m.-10:20 a.m.</i></p> <p><input type="checkbox"/> Concurrent Session 4.1 On the Path to Becoming a PMHNP/Energy Healer-Pt II: Practicing Energy Healing on Treatment Refractory Emotionally Disturbed Youth and Adults</p> <p><input type="checkbox"/> Concurrent Session 4.2 High Risk Patients: Changing Profiles and Implications for Practice</p> <p><input type="checkbox"/> Concurrent Session 4.3 Effect of a Motivational Intervention on Exercise Behavior in Persons with Schizophrenia Spectrum Disorders (SSDs)</p> <p><input type="checkbox"/> Concurrent Session 4.4 Recognizing Early Indications of Risk for Anorexia Nervosa in Children and Adolescents</p>	<p><i>Friday, April 1, 2011 3:15 p.m.-4:05 p.m.</i></p> <p><input type="checkbox"/> Concurrent Session 7.1 Patient Centered, Trauma Focused, Collaborative Problem Solving: A Model of Nursing Conceptualization and Care for Children</p> <p><input type="checkbox"/> Concurrent Session 7.2 Gero-Psych Teaching and Learning Strategies: Cognitive Assessment During a Seasonal Flu Clinic</p> <p><input type="checkbox"/> Concurrent Session 7.3 Nursing Education in Cyberspace: Teaching Graduate Psychopharmacology Online</p> <p><input type="checkbox"/> Concurrent Session 7.4 Effective Internet-Based Cognitive Behavioral Therapy on Decreasing Depressive Symptoms and Increasing Self-Esteem in Overweight Adolescents</p> <p><input type="checkbox"/> Concurrent Session 7.5 Using the Myers-Briggs Inventory to Increase Effectiveness of Couples Assessment and Counseling</p>	<p><i>Saturday, April 2, 2011 11:00 a.m.-11:50 a.m.</i></p> <p><input type="checkbox"/> Concurrent Session 9.1 Integrated Care for Post-Traumatic Stress Disorder</p> <p><input type="checkbox"/> Concurrent Session 9.3 Sibling Violence: State of the Science-Establishing Practice Guidelines</p> <p><input type="checkbox"/> Concurrent Session 9.4 Implementation of Modified Health Education Strategies for Increasing Diabetes Knowledge in the Severe and Persistently Mentally Ill (SPMI)</p>
	<p><i>Friday, April 1, 2011 10:40 a.m.-11:30 a.m.</i></p> <p><input type="checkbox"/> Concurrent Session 5.1 Healing Touch: Complementary Therapy for Mental Health</p> <p><input type="checkbox"/> Concurrent Session 5.2 Resilience in Family Members of Persons with Serious Mental Illness</p> <p><input type="checkbox"/> Concurrent Session 5.3 Emotional Intelligence: Impact on Student Performance in Psychiatric/Mental Health Settings</p>	<p><input type="checkbox"/> Concurrent Session 10.1 New Approach to Substance Abuse Education in Undergraduate Nursing</p> <p><input type="checkbox"/> Concurrent Session 10.2 Planning Community-Based Participatory Research: Collaboration at the Most Basic Level</p> <p><input type="checkbox"/> Concurrent Session 10.3 The Role of the Psychiatric Consultation Liaison Nurse in Developing a Comprehensive Weight Management Program</p>	

Payment

Please total your fees from the different categories included on this registration form. **ISPN's Federal Tax ID#: 36-2905672.**

Psychopharmacology Institute Registration Total: _____

Annual Conference Registration Total: _____

Foundation Event: _____

Boxed Lunch: _____

Membership Renewal: _____

Sub-total: _____

Presenter Discount (if applicable): _____

Registration Fee Discount: _____
(if attending both the Psychopharmacology Institute and Annual Conference)

Grand Total: _____
(Please include this amount with your registration form)

Check one and enclose payment. Registration forms not including the proper registration fee will be returned immediately. Please do not send cash.

Check (made payable in U.S. funds to ISPN)

MasterCard/Visa/American Express

Card Number: _____

Expiration Date: _____

Card Holder Name (please print clearly): _____

Card Holder Signature: _____

Please complete both sides of this registration form and mail or fax it with your payment (no purchase orders please) to:

Return completed form to: ISPN • 2424 American Lane • Madison, WI 53704 USA • Fax: +1-608-443-2478 or +1-608-443-2474

For more information: Telephone: +1-866-330-7227 or +1-608-443-2463 • Email: conferences@ispn-psych.org • Website: <http://www.ispn-psych.org>